

To my Brothers.
JACK AND BILLY ARMSTRONG.

Song and Chorus

ITS HARD TO BE A MINSTER

BY
J. HAYGOOD ARMSTRONG.
Sung with great success by the
ARMSTRONG MINSTRELS.

2c

LUDDEN & BATES.
Savannah, Ga.

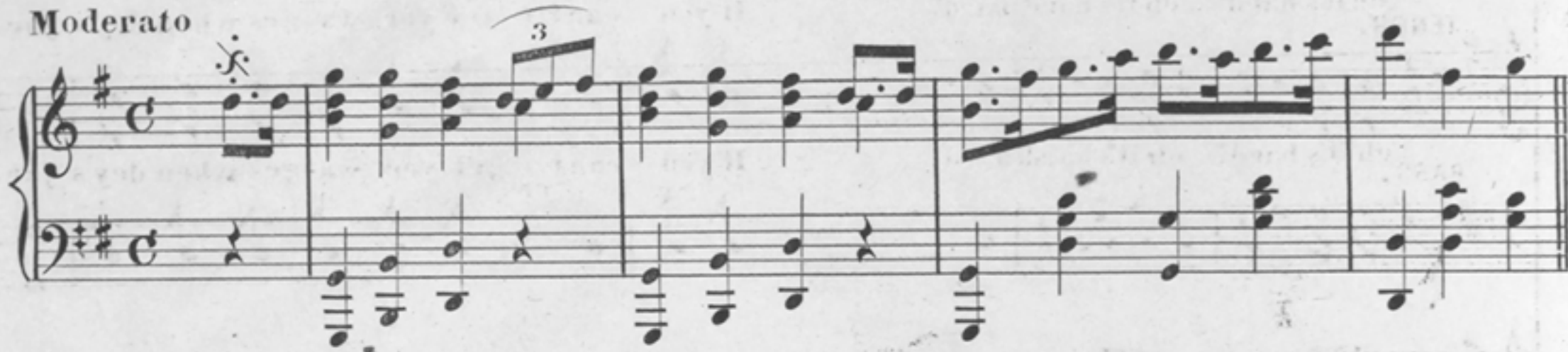
PUBLISHED BY
MR. SMITH MUSIC HOUSE.
Charlotte, N. C.

IT'S HARD TO BE A NIGGER.

SONG AND CHORUS.

WORDS & MUSIC BY J. HAGOOD ARMSTRONG.

Moderato



1 You can work for dis un, you can work for dat, You can work for wages or
 2 You can plant your cot ton, you can plant your corn, You will house all ob it in de

The vocal melody is written on a single staff with a treble clef, a key signature of one sharp (F#), and a common time signature (C). The piano accompaniment is written on a grand staff (treble and bass staves) with a key signature of one sharp (F#) and a common time signature (C). The melody consists of eighth and quarter notes, while the piano accompaniment consists of chords and single notes.

part ob de crap Faw it makes no dif'rence you'll find in time, Whiteman's boun to
 whiteman's barn, Work'roun de house in big meet'n time, Makes no dif'rence you's

The vocal melody is written on a single staff with a treble clef, a key signature of one sharp (F#), and a common time signature (C). The piano accompaniment is written on a grand staff (treble and bass staves) with a key signature of one sharp (F#) and a common time signature (C). The melody consists of eighth and quarter notes, while the piano accompaniment consists of chords and single notes.

REFRAIN.

SOLO OR UNISON.

CHORUS.

bring you out behime, Oh it's hard, it's hard, it's hard to be a nigger, Oh it's
 com - in out behime,

The vocal melody is written on a single staff with a treble clef, a key signature of one sharp (F#), and a common time signature (C). The piano accompaniment is written on a grand staff (treble and bass staves) with a key signature of one sharp (F#) and a common time signature (C). The melody consists of eighth and quarter notes, while the piano accompaniment consists of chords and single notes.

AIR.

hard! it's hard! It's hard to be a nigger if you can't get yer wa-ges when dey's jue.

ALTO.

oh it's hard! oh it's hard! hard! If you can't get yer wa-ges when dey's jue.

TENOR.

oh it's hard! oh it's hard! hard! If you can't get yer wa-ges when dey's jue.

BASS.

3.

You can work at the railroad, load all the freight,
 Begin in de mornin and you work till late,
 You can wait on de boss, be berry kind,
 Makes no difference, you're comin out b'hime.

CHORUS. Oh! it's hard,

4.

Eder wet or cole, you can dribe an ole dray,
 An you be so hongry de whole blessed day,
 You eats three meals at home supertime,
 Makes no difference, you're comin out b'hime.

CHORUS.

5.

Look at ole Judge Davis and Billy Mahone,
 Dey am fightin an scratchin for self alone;
 An you will find in double quick time
 White man's gwine to bring um out behime.

CHORUS.

6.

You can jine de league or you can jine de strike,
 You can hold your meetins ebbry blessed night,
 You can cut a swell, or cut a shine,
 White man's boun to bring you out behime.

CHORUS.