

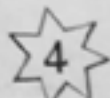
Nancy Fat & My Polly Ann

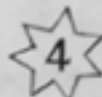
TWO SONGS



Written and sung with the greatest success by

DAVE REED,
MUSIC BY
T. MC NALLY.

No 1 Nancy Fat 

No 2 My Polly Ann 

NEW YORK,
Published by W^m A. POND & C^o 547 Broadway.

LITH. OF MAJOR & KNAPP 49 BROADWAY N.Y.

BOSTON,
O. DITSON & C^o

MILWAUKEE,
H. N. HEMPSTED

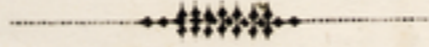
CHICAGO,
ROOT & CADY.

PITTSBURG,
H. KLEBER & BRO.

Entered according to Act of Congress in the year 1864 by W. A. Pond & C^o in the Clerk's Office of the District Court, of the South District of New York

NANCY FAT.

SONG.



Arr'd. by C. GLOVER.

1. O Nan - cy Fat she was a gal,
2. O Nan - cy Fat she had a mouth,

5915

Entered according to Act of Congress, A. D. 1864 by W. A. POND and C^o in the Clerk's Office of the District Court of the Southern District of New York.

Fair and tall and slen - der, The fair - est gal I ev - er saw, In
I can - not now describe it, It open'd like a safe - ty valve, When

all the fe - male gender; A love - ly foot I know she had, In -
she wish'd to di - vide it; And well I knows she had a nose, And

- to a boot to thrust, Her an - kles small were made for use, To
ev'ry - bo - dy knows it, The end of it^ just looks as if The

Chorus.

keep from it the dust. } O Nan - cy Fat, What
 Brandy bot - tle froze it. }

The first system of the chorus features a vocal line in G major with a 2/4 time signature. The lyrics are: "keep from it the dust. } O Nan - cy Fat, What Brandy bot - tle froze it. }". The piano accompaniment consists of a right-hand part with chords and a left-hand part with a simple bass line.

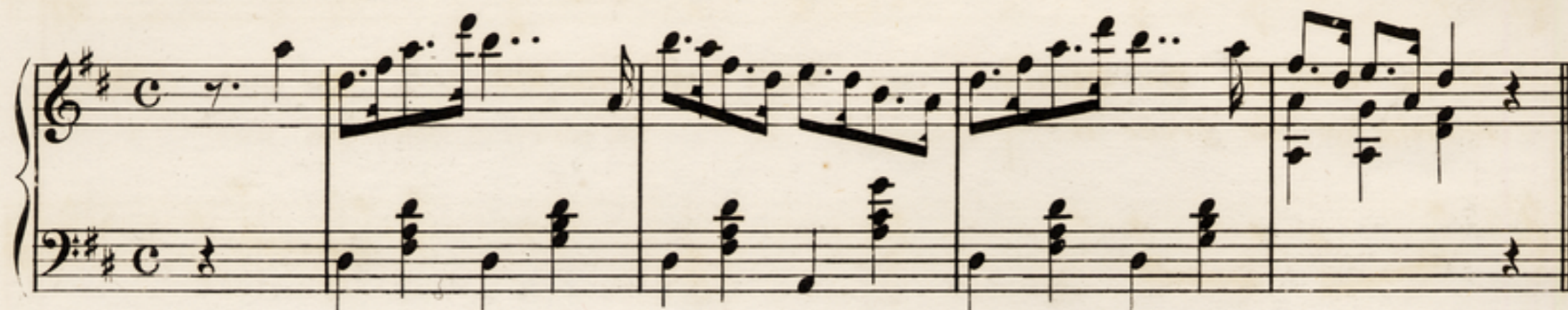
are you at, I love you as no oth - er, O

The second system continues the chorus with the lyrics: "are you at, I love you as no oth - er, O". The musical notation follows the same structure as the first system, with a vocal line and piano accompaniment.

Nan - cy Fat get out of that, With sweet - ness me youll smother.

The third system concludes the chorus with the lyrics: "Nan - cy Fat get out of that, With sweet - ness me youll smother." The musical notation includes a vocal line and piano accompaniment, ending with a double bar line.

DANCE.



3.

O Nancy Fat had two such eyes,
 Like burnt holes in a blanket,
 The inspiration from her soul
 I took it in and drank it;
 She says this darkey am so sweet
 She loves me like molasses,
 Dat small machine she calls her heart,
 Goes pit pat as it passes.

Chorus. Nancy Fat, &c.

4.

If Nancy Fat does marry me,
 How nice we'll live together,
 She and I and all de bairns
 Like ducks in rainy weather;
 And as we march unto de church,
 And hear de bells a ringin,
 De joy will break dis Nigger's heart,
 To hear de darkies singin.

Chorus. Nancy Fat, &c.