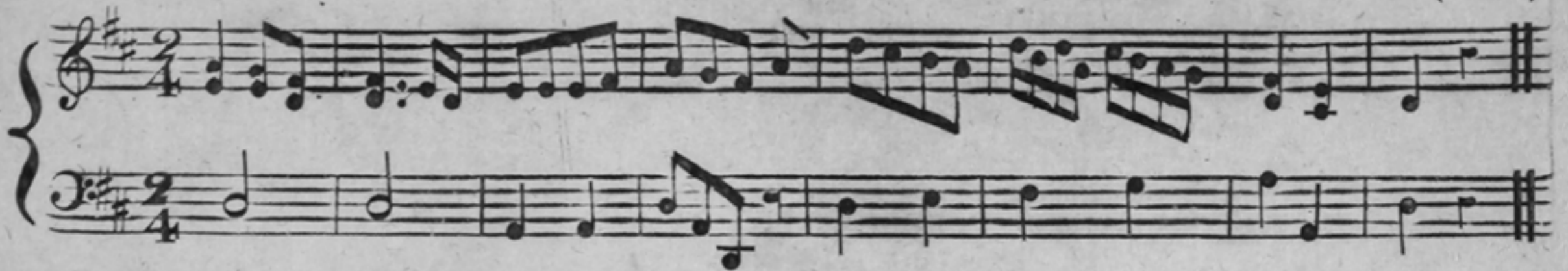


# SINCE THEN I'M DOOM'D

Sung by M<sup>rs</sup> MARSHALL in the SPOILD CHILD

Published at B: Carr's Musical Repositories Philadelphia & New York & J: Carrs Baltimore (12 Cts)



Since then I'm doom'd this sad reverse to prove to quit each object of my infant care

torn from an honour'd parents tender love and driven the keenest storms of life to

bear ah! then forgive me in pity let me part your frown too sure wou'd break my sinking

heart ah! then forgive me in pity let me part your frown too sure wou'd

break w break my sinking heart.

Where'er I go what'er my lowly state || And when perhaps you're musing o'er my fate  
Yet gratef<sup>l</sup> mem'ry still shall linger here || You then may greet me with a tender tear Ah! then &c.