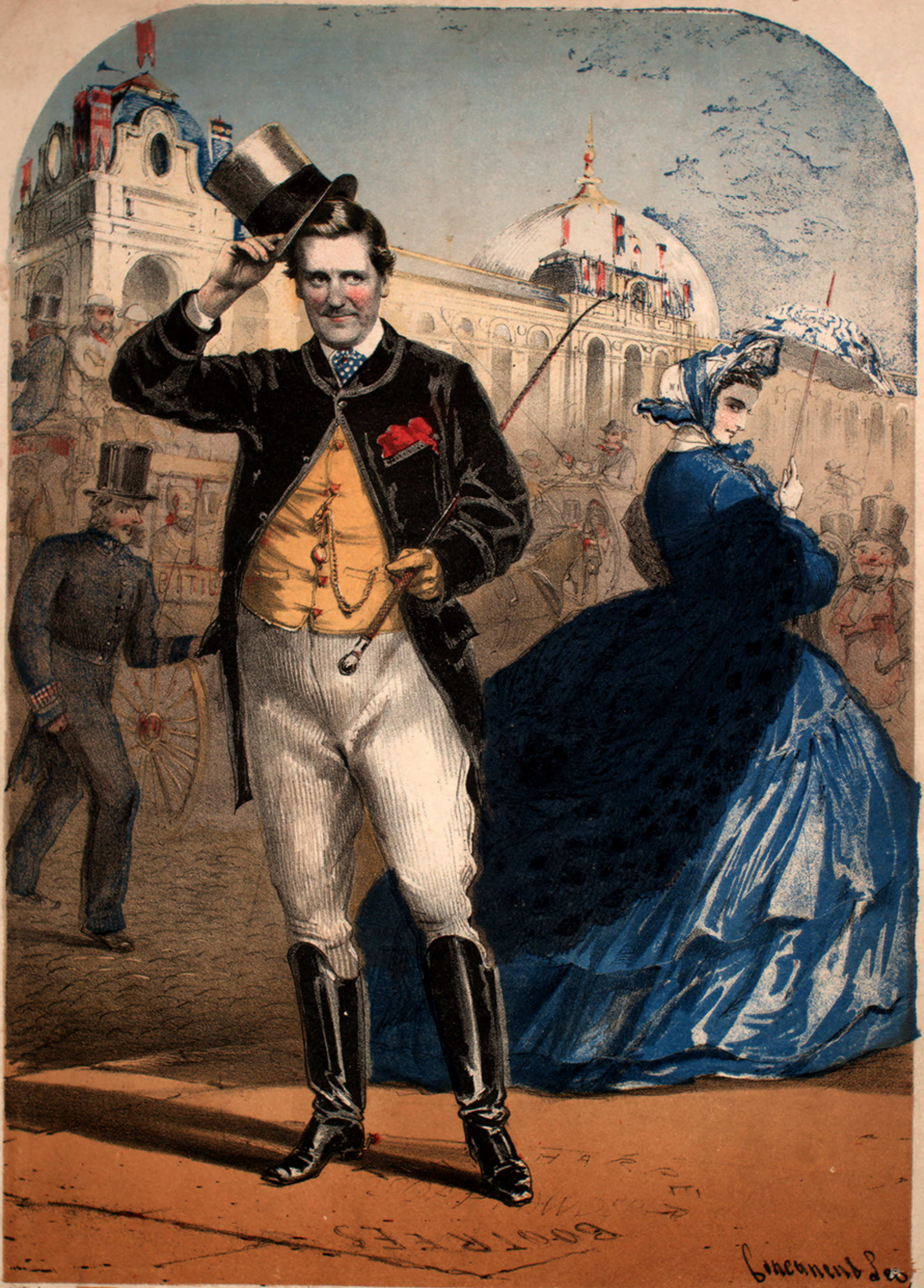


THE DARK GIRL DRESS'D IN BLUE,



SUNG BY KATE HARLEY, AND
WRITTEN & SUNG BY

HARRY CLIFTON,

AT THE
LONDON MUSIC HALLS.

LONDON

THE DARK GIRL DRESSED IN BLUE.

Allegretto.

WRITTEN BY HARRY CLIFTON.

mf

The piano introduction consists of two staves. The upper staff is in treble clef with a key signature of one flat (B-flat) and a common time signature (C). It begins with a series of eighth and sixteenth notes, followed by a melodic line. The lower staff is in bass clef and provides a harmonic accompaniment with chords and single notes.

From a vil_lage a_way in Leicester-shire, To Lon-don here I

The first line of the song features a vocal line on a treble clef staff and piano accompaniment on two staves (treble and bass clefs). The lyrics are: "From a vil_lage a_way in Leicester-shire, To Lon-don here I". The piano part includes a dynamic marking of *f* (forte).

came, To see the Ex-hi-bition and All pla-ces of great fame. But

The second line of the song continues the vocal line and piano accompaniment. The lyrics are: "came, To see the Ex-hi-bition and All pla-ces of great fame. But".

what I suf-fer'd since I-came, I now will tell to you,.... How I

The third line of the song continues the vocal line and piano accompaniment. The lyrics are: "what I suf-fer'd since I-came, I now will tell to you,.... How I".

lost my heart and sen-ses too,Thrò a dark girl dress'd in blue.

The fourth line of the song concludes the vocal line and piano accompaniment. The lyrics are: "lost my heart and sen-ses too,Thrò a dark girl dress'd in blue." The piano part ends with a double bar line.

CHORUS.

ALTO. She was a fine girl fol de riddle I do A charmer Fol de riddle eh.

TENOR. She was a fine girl fol de riddle I do A charmer Fol de riddle eh.

BASS. She was a fine girl fol de riddle I do A charmer Fol de riddle eh.

* AIR. She was a fine girl fol de riddle I do A charmer Fol de riddle eh.

PIANO-FORTE.

SECOND VERSE.

'Twas on a Fri-day morn-ing The first day of Au-gust, When of that day I

e-ver think My heart feels ready to bust, I went in a six-penny omnibus, To the

Ex-hibition of Sixty two, On a seat by the right hand side of the door, Sat a dark girl dress'd in blue.

* THIS CAN BE SUNG AS A SOLO IN THE ABSCENCE OF THE CHORUS.

3rd When we ar...riv'd in the Brompton Road The La...dy look'd so strange, The con...
 4th We chatted and talk'd as we onward walk'd About one thing or the other, She

...duc...tor he said sixpence ma'am! Said she I have no change, I've
 ask'd me too oh wasn't it kind? If I had a Father or Mother Oh

no...thing less than a five pound note, What...ev...er shall I do?... Said I al...
 yes says I and a grandmother too But pray miss what are you?... Oh I'm

CHORUS PAGE 2.

...llow me to pay... Oh thank you Sir! Said the dark girl dress'd in blue.
 chief engi...neer in a Milliner's Shop, Says the dark girl dress'd in blue.

5th We walk'd a...bout for an hour or two Thro' the build...ing near and
 6th I call'd a wai...ter and handed him the note, And said please change me

far 'Till we came to the grand re-freshment room I went straight up to the
 that The wai-ter bow'd and touch'd his hair For this wai-ter wore no

bar She slipp'd in my hand a five pound note I said what are you going to
 hat In silver and gold five pounds he brought I gave him coppers a

CHO^S PAGE 2.

do... Oh dont think it strange I must have change Said the dark girl dress'd in blue.
 few.. And the change of the note I then did hand To the dark girl dress'd in blue.

7th She thank'd me and said I must away Farewell till we meet a-gain For I've to go to
 8th This tall man said excuse me sir I'm one of the X di- vision That note was bad my

Pim-li-co To catch the Brighton train She quick-ly gli-.....ded
 du-ty is, To take you on sus-picion Said I for a La-dy I ob-

from my sight And soon was lost to view..... I
 taind the change He said are you telling me true..... Where's she

turn'd to leave when by my side Stood a tall man dress'd in blue.
 live, What's her name, says I, I dont know She was a dark girl dress'd in blue.

CHORUS PAGE 2.

NINTH VERSE.

My story they believ'd they thought I'd been deceiv'd But they said I must hand back the

cash I thought 'twas a sin as I gave them the tin And a way went five pounds smash So

all young mentake my advice Be careful what you do When you make the acquaintance of

La_dies strange Especial.ly a "dark girl dress'd in blue?" CHORUS PAGE 2.