

WM. E. PAGE
MUSIC DEALER
1220 T STREET
SACRAMENTO, CALIF
PHONE MAIN 1470-45

Foster's Melodies,
No. 48.

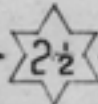


THE
Glendy Burk

A
Plantation Melody

Written and Composed by

STEPHEN C. FOSTER.



NEW YORK
Published by FIRTH, POND & CO. 547 Broadway.

Boston.
O. DITSON & CO.

Cincinnati.
C. Y. FONDA.

Pittsburgh.
H. KLEBER & BRO.

Entered according to Act of Congress in the Year 1860 by Firth, Pond & Co in the Clerk's Office of the District Court of the Southern District of New York.

THE GLENDY BURK

WORDS AND MUSIC, BY STEPHEN & FOSTER.

Moderately fast.

The piano introduction consists of two staves in 2/4 time, marked 'Moderately fast'. The key signature has one sharp (F#). The melody is in the treble clef, and the accompaniment is in the bass clef. The piece begins with a rhythmic pattern of eighth and sixteenth notes, followed by a series of chords and melodic lines.

De Glen.dy Burk is a mighty fast boat, Wid a mighty fast cap.tain too; He

The first vocal line is on a single staff in treble clef. The lyrics are: "De Glen.dy Burk is a mighty fast boat, Wid a mighty fast cap.tain too; He". The piano accompaniment continues below, with chords and a steady bass line.

sits up dah on de hur.ri.cane roof And he keeps his eye on de crew. I

The second vocal line continues the melody. The lyrics are: "sits up dah on de hur.ri.cane roof And he keeps his eye on de crew. I". The piano accompaniment provides harmonic support with chords and a consistent bass line.

cant stay here, for dey work too hard; I'm bound to leave dis town; I'll

The third and final vocal line on this page. The lyrics are: "cant stay here, for dey work too hard; I'm bound to leave dis town; I'll". The piano accompaniment concludes the section with a final chord and a steady bass line.

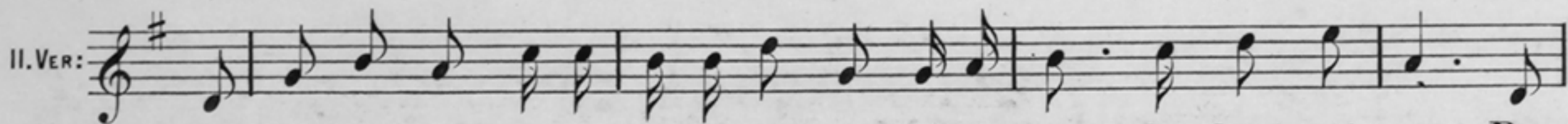
take my duds and tote 'em on my back When de Glen · dy Burk comes down.

CHORUS

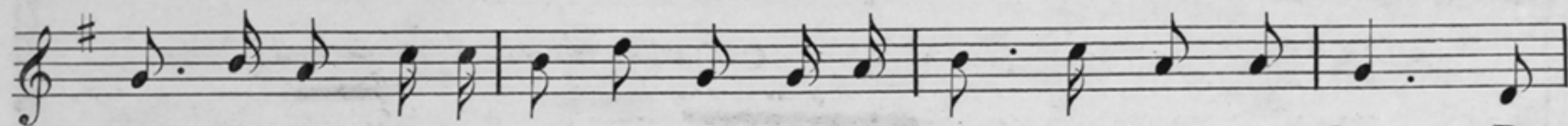
Ho! for Lou' · si · an · a! I'm bound to leave dis town; I'll

take my duds and tote 'em on my back When de Glen · dy Burk comes down.

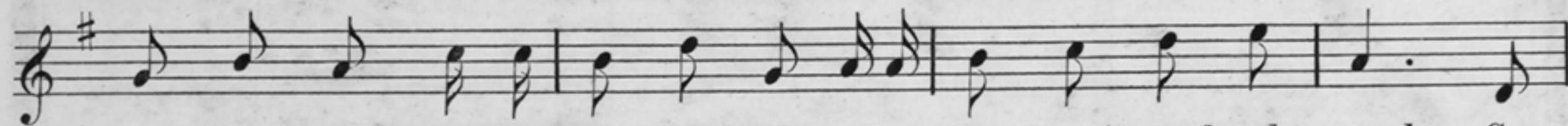
4861



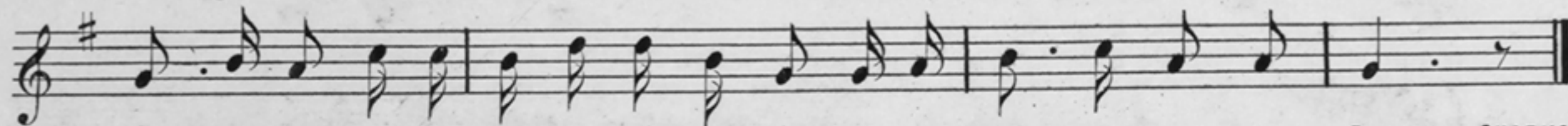
De Glen-dy Burk has a fun-ny old crew And dey sing de boatman's song, Dey



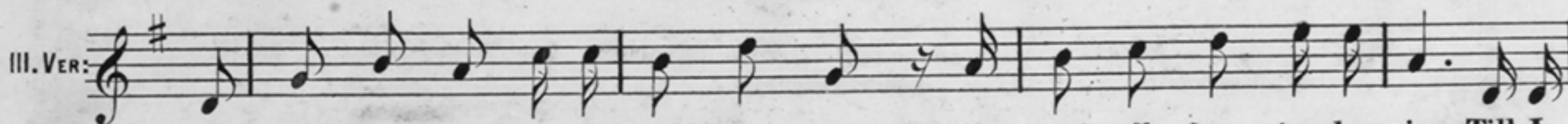
burn de pitch and de pine knot too, For to shove de boat a - long. De



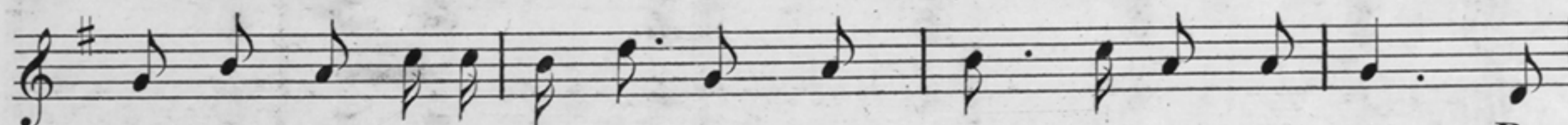
smoke goes up and de in - gine roars And de wheel goes round and round, So



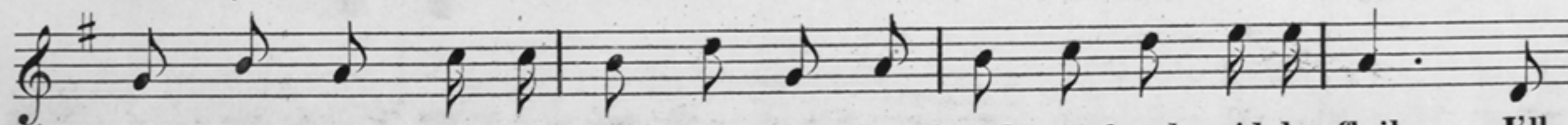
fair you well! for I'll take a lit - tle ride When de Glen - dy Burk comes down. CHORUS.



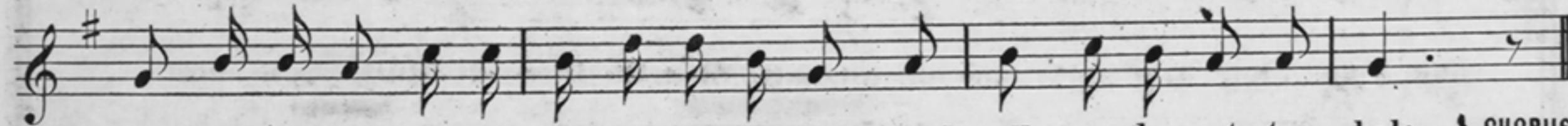
I'll work all night in de wind and storm, I'll work all day in de rain, Till I



find my - self on de le - vy - dock In New Or - leans a - gain. Dey



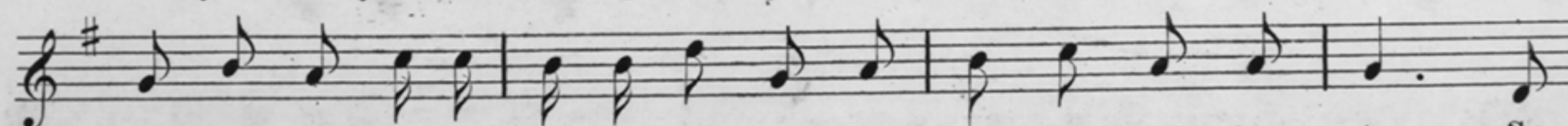
make me mow in de hay field here And knock my head wid de flail, I'll



go wha dey work wid de su - gar and de cane And roll on de cot - ton bale. CHORUS.



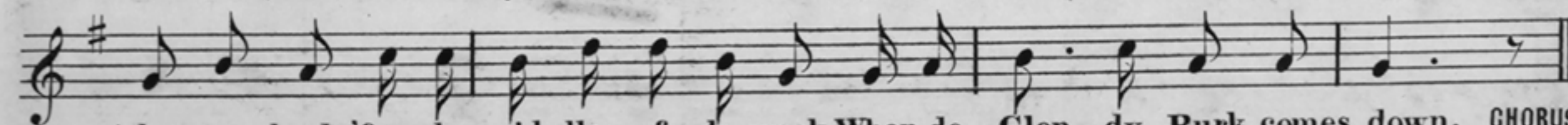
My la - dy love is as pret - ty as a pink, I'll meet her on de way I'll



take her back to de sun - ny old south And dah I'll make her stay So



dont you fret my ho - ney dear, Oh! dont you fret Miss Brown I'll



take you back 'fore de mid - dle of de week When de Glen - dy Burk comes down. CHORUS.