

FOSTER'S
MELODIES
No. 35.

WHERE HAS LULA GONE

Ballad

BEING A COMPANION TO THE

POPULAR SONG

LULA IS GONE

Written and Composed by

STEPHEN C. FOSTER.

Author of

WILLIE WE HAVE MISSED YOU. OLD FOLKS AT HOME. &C.&C.

3

NEW YORK

Published by FIRTH, POND & CO. 54 1/2 Broadway

Pittsburgh.
H. KLEBER & BRO.

Cincinnati.
C. Y. FONDA.

St. Louis.
H. PILCHER & SON.

New Orleans.
P. P. WERLEIN & CO.

Entered according to Act of Congress in 1858 by Firth, Pond & Co. in the Clerk's Office of the District Court of the Southern District of New York.

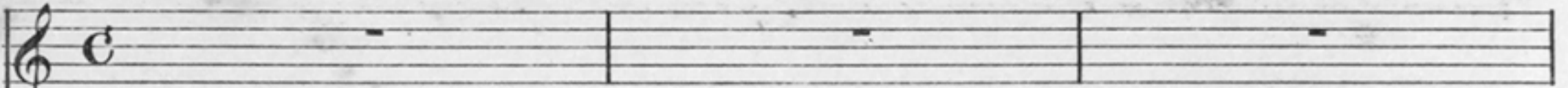
WHERE HAS LULA GONE

POETRY AND MUSIC

BY

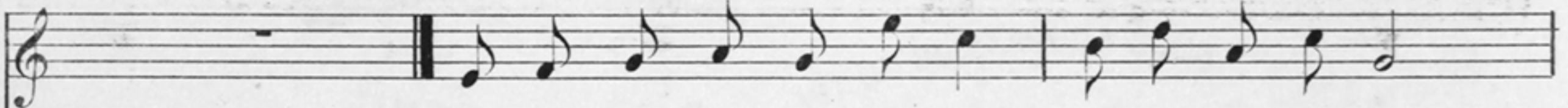
STEPHEN C. FOSTER.

VOICE.

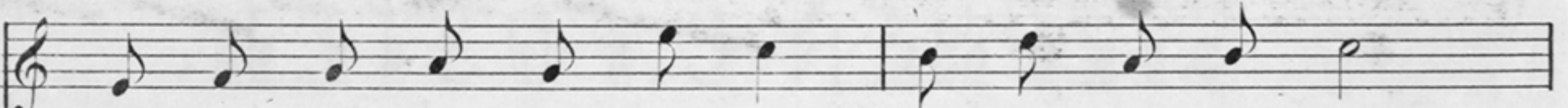
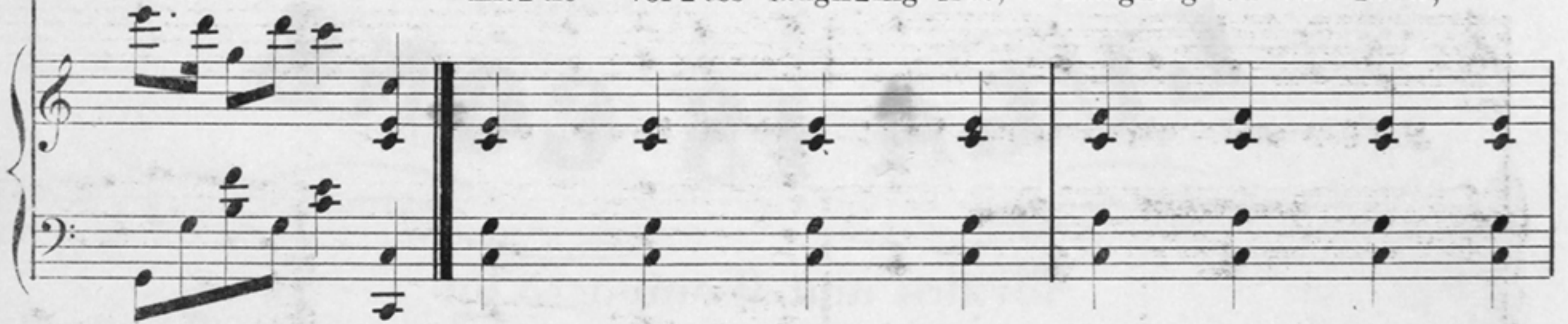


Moderato.

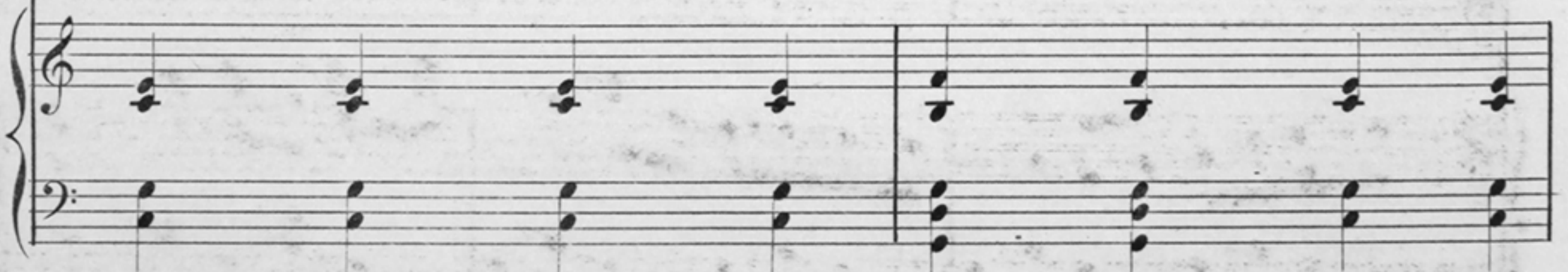
PIANO.



Lit - tle voi - ces laugh - ing free, Laughing on the lawn,



Tell me can you an - swer me, - Where has Lu - la gone?



Ent'd according to Act of Congress D1858 by Firth, Pond & C^o in the Clerks Office of the District Court of the Southern District of N.Y.

Where is that mer-ry form Ev-er on the move, Glan - cing through calm and storm

Living beams of love? Soft rays of mel-low light From her eyes were thrown,

And her smiles were sum-mer bright, - Where has Lu - la gone?

ritard? *tempo.*

II. VERSE. She has left the sun - ny hills In their blush - ing bloom,
 III. VERSE. Sum - mer days have come and gone, Star - ry nights have passed,

She has left the run - ning rills Gush - ing round her home,
 Ma - ny dreams of hope have flown Since I saw her last

Far in some dis - tant land She may yet be seen
 Roam - - - ing in rap - ture wild On the moun - tain side,

Lead - - - ing a fai - - ry band Like a fai - - ry queen.
 Smi - - - ling when ro - - ses smiled, Sigh - ing when they died,

Far, far my long - ing heart On her path has flown,
 Wild as the ho - ney bee, Gen - tle as the fawn,

Yet no an - swer can im - part; - Where has Lu - la gone?
 Fair - er than the dawn was she; - Where has Lu - la gone?

ritard?

tempo.