

To my Friend Louis H. Stanton.
Germanstown, Penn.

THE SCHOOL-HOUSE IN THE LANE



WROTE BY **GEORGE COOPER.** ILLUSTRATED BY **EDWIN CHRISTIE.**

BOSTON.

Published by OLIVER DITSON & CO. 277 Washington St.

PHILADA.
LEE & WALKER.

CINN.
JOHN CHURCH & CO.

NEW YORK.
C.H. DITSON & CO

BOSTON.
J.C. HAYNES & CO.

CHICAGO.
LYON & HEALY.

Entered according to act of Congress in the year 1871 by Oliver Ditson & Co. in the office of the Librarian of Congress at Washington.

THE SCHOOL-HOUSE IN THE LANE.

Words by GEORGE COOPER.

Music by EDWIN CHRISTIE.

With expression.

Piano introduction in C major, 4/4 time. The music features a melody in the right hand and a rhythmic accompaniment in the left hand. Dynamics include *mf* and *dim.*

Vocal line starting with a *p* dynamic. The melody is simple and clear, with a final note on a half note.

1. Oh! child-hood's days so sweet and fair, I dream of you to -
 2. But where are now the fac-es bright, My com-rades dear of
 3. Oh! sweet the les-sons there we learned From teach-ers kind and

Piano accompaniment for the first part of the song, starting with a *p* dynamic. It features a steady rhythmic pattern in the right hand and a simple bass line in the left hand.

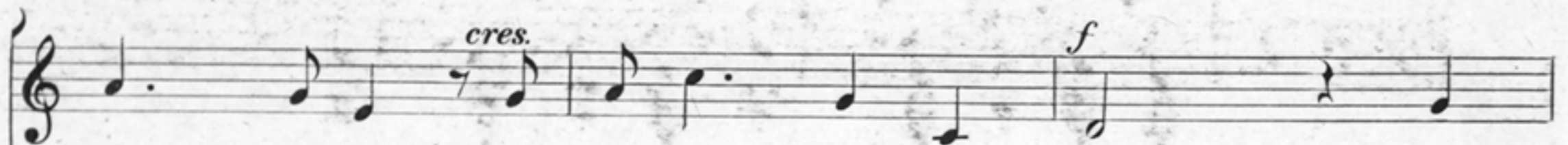
Vocal line for the second part of the song, continuing the melody from the first part.

day! A - gain I roam, as free as air, A
 old? Our mer - ry games of pure de - light? The
 true! And long my wea - ry heart has yearned To

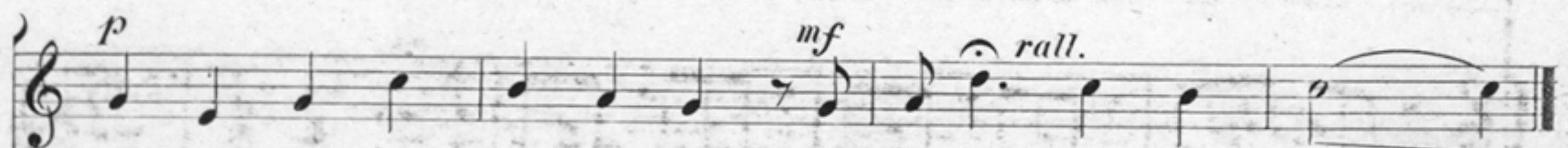
Piano accompaniment for the second part of the song, continuing the rhythmic pattern from the first part.



mid your scenes so gay! . . . I join in all your
 tales of joy we told? . . . Our sweet-hearts, too, of
 meet those skies of blue! . . . For like a flow'r be -



sports of glee A hap-py child a - gain! And
 long a - go, We ne'er shall meet a - gain, I
 side the scene, 'Till lifes dull wea - ry wane, Shall



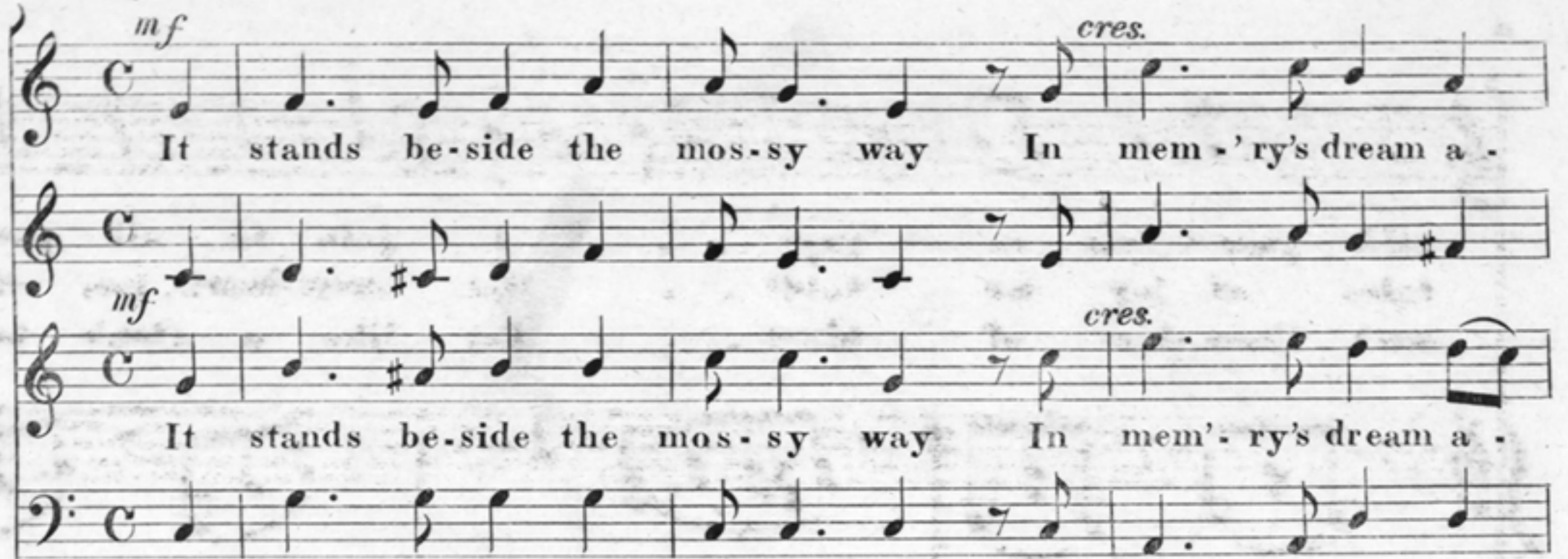
O, with glist'ning eyes I see - The school-house in the lane!
 won-der if they now would know - The school-house in the lane!
 bloom in mem'ry fresh and green, - The school-house in the lane!



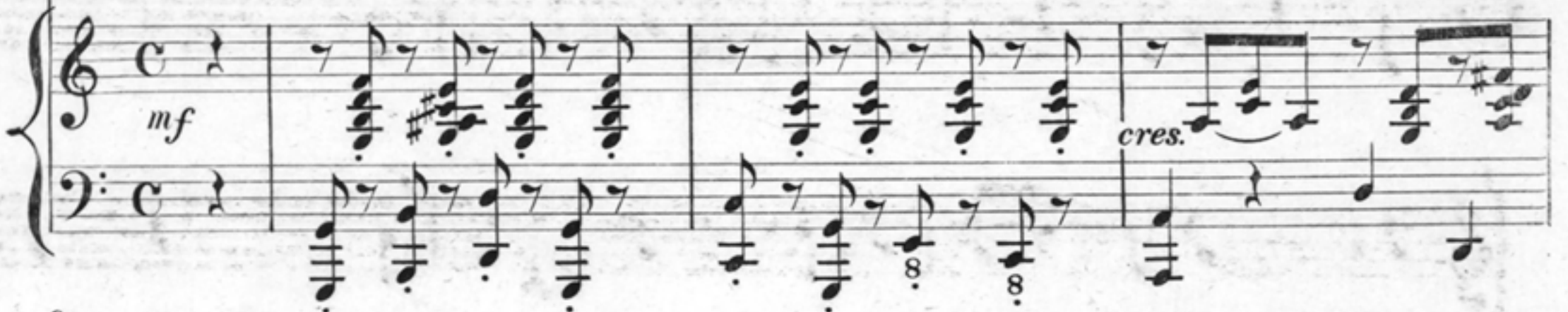
Chorus or Solo.

mf It stands be-side the mos-sy way In mem-'ry's dream a - *cres.*

mf It stands be-side the mos-sy way In mem-'ry's dream a - *cres.*

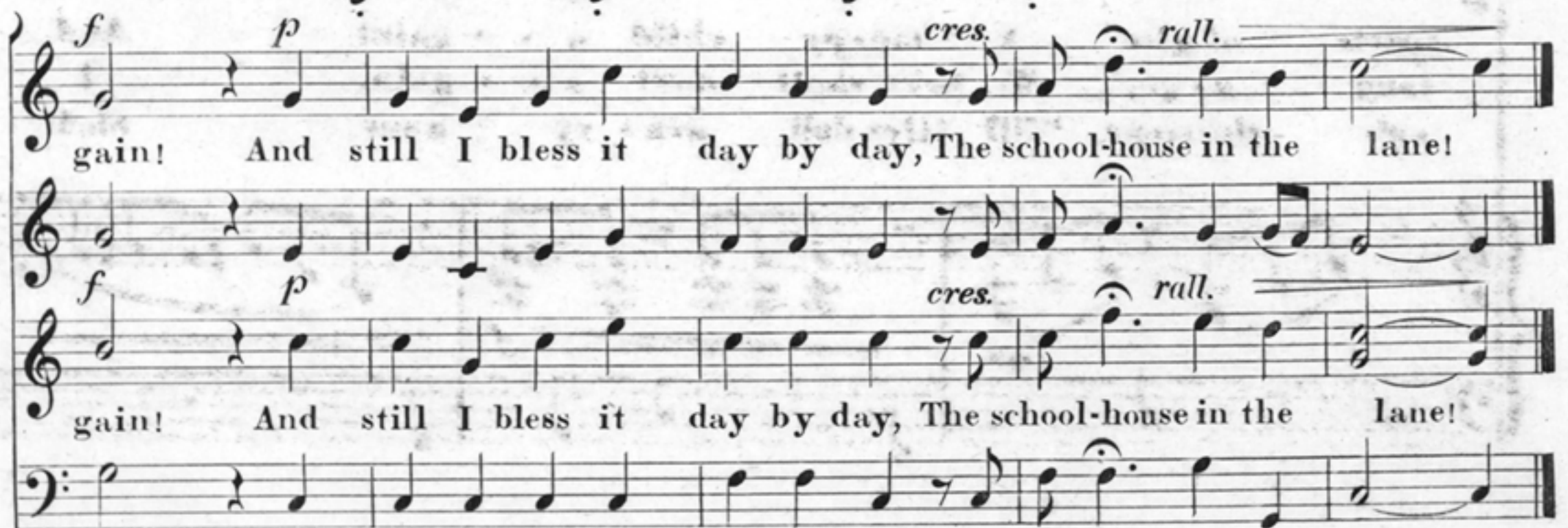


mf *cres.*



f gain! And still I bless it day by day, The school-house in the lane! *p* *cres.* *rall.*

f gain! And still I bless it day by day, The school-house in the lane! *p* *cres.* *rall.*



f *p* *cres.* *rall.*



Con espressione *f* *dim.*

