

To Miss Ella Rain.

of Goshen, Ind.

My
Mother's Angel Voice

Words and Music by

DELOS SPAULDING.



CHICAGO.

PUBLISHED BY H.M. HIGGINS, 117 RANDOLPH ST.

Entered According to Act of Congress 10 1866 by H.M. Higgins in the Clerks Office of the Dis. Ct. of the Nth. Dis. of Ill.

MY MOTHER'S ANGEL VOICE.

Words & Music by Delos Spalding.

con espressione

Musical notation for the piano introduction, consisting of two staves (treble and bass clef) in 4/4 time. The melody is in the treble clef, and the accompaniment is in the bass clef. The piece begins with a single bass note in the left hand, followed by chords in both hands.

Musical notation for the piano introduction, continuing from the previous block. It shows the final measures of the introduction, ending with a double bar line. The melody continues in the treble clef, and the accompaniment remains in the bass clef.

3 Man - - y, man - y Suns have set, quite gray my Locks have grown Since

1 O'er my cra - dle, years a-go, one well re-mem-bered form Would

2 Years roll by, and oft - en comes the temp - ter to be - guile, I

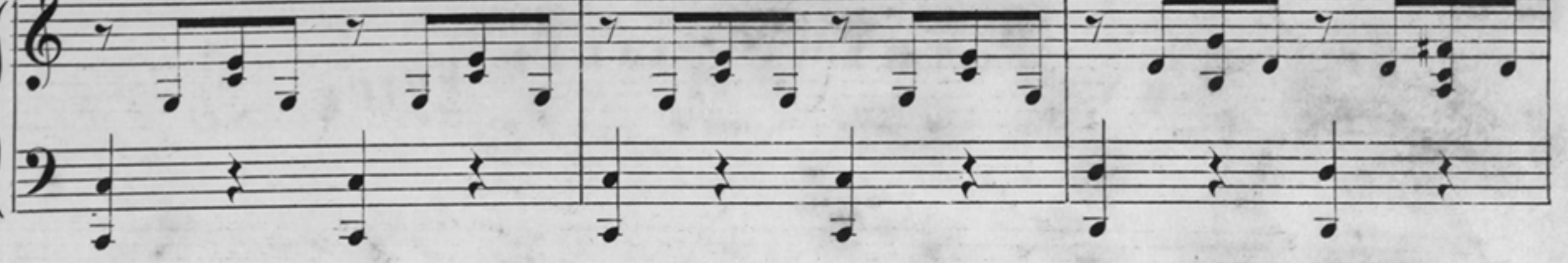
Musical notation for the vocal accompaniment, consisting of two staves (treble and bass clef) in 7/8 time. The melody is in the treble clef, and the accompaniment is in the bass clef. The piece begins with a single bass note in the left hand, followed by chords in both hands.

moth - - er laid her down to sleep - bright an gels took her



watch with love so ten - - der - ly my young lifes ear - ly

rec - - ol - lect those Les - - sons taught to me while but a

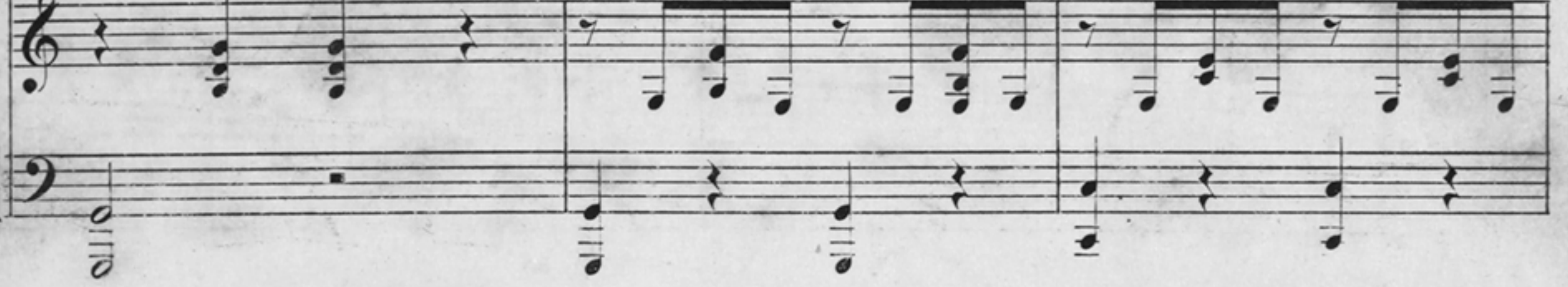


home; And till the time shall come when I will.

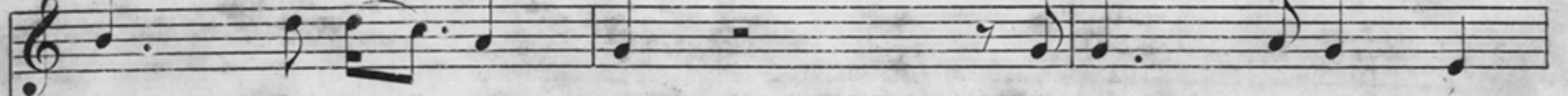


morn; Un - to her arms of oth - ers all to

child; And on the brink I've wav' - ring stood when



meet her and re - joice, There's naught on earth will



go, 't would be my choice, Then sing - - ing soft and

wrong would seem the choice, But just in time to

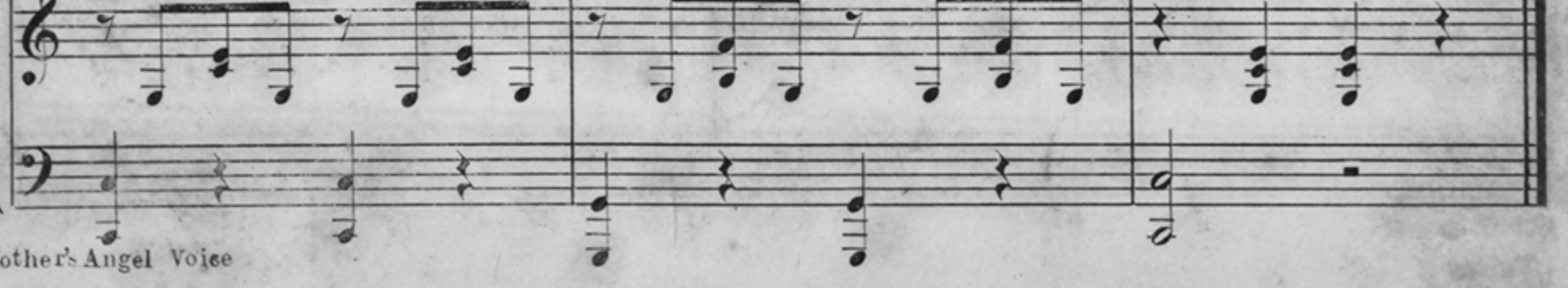


be to me like An - - gel Mother's voice .



low, I'd hear my An - - gel Mother's voice .

save, would come my An - - gel Mother's voice .



CHORUS

Air

Mu - sic peal - ing on the air, whenves - per bells re - joice,

Alto

Tenor

Mu - sic peal - ing on the air, whenves - per bells re - joice,

Bass

P I A N O

Nev - er yet could be compared to Moth - er's An - gel voice.

Nev - er yet could be compared to Moth - er's An - gel voice.

Mother's Angel Voice

Chandler.