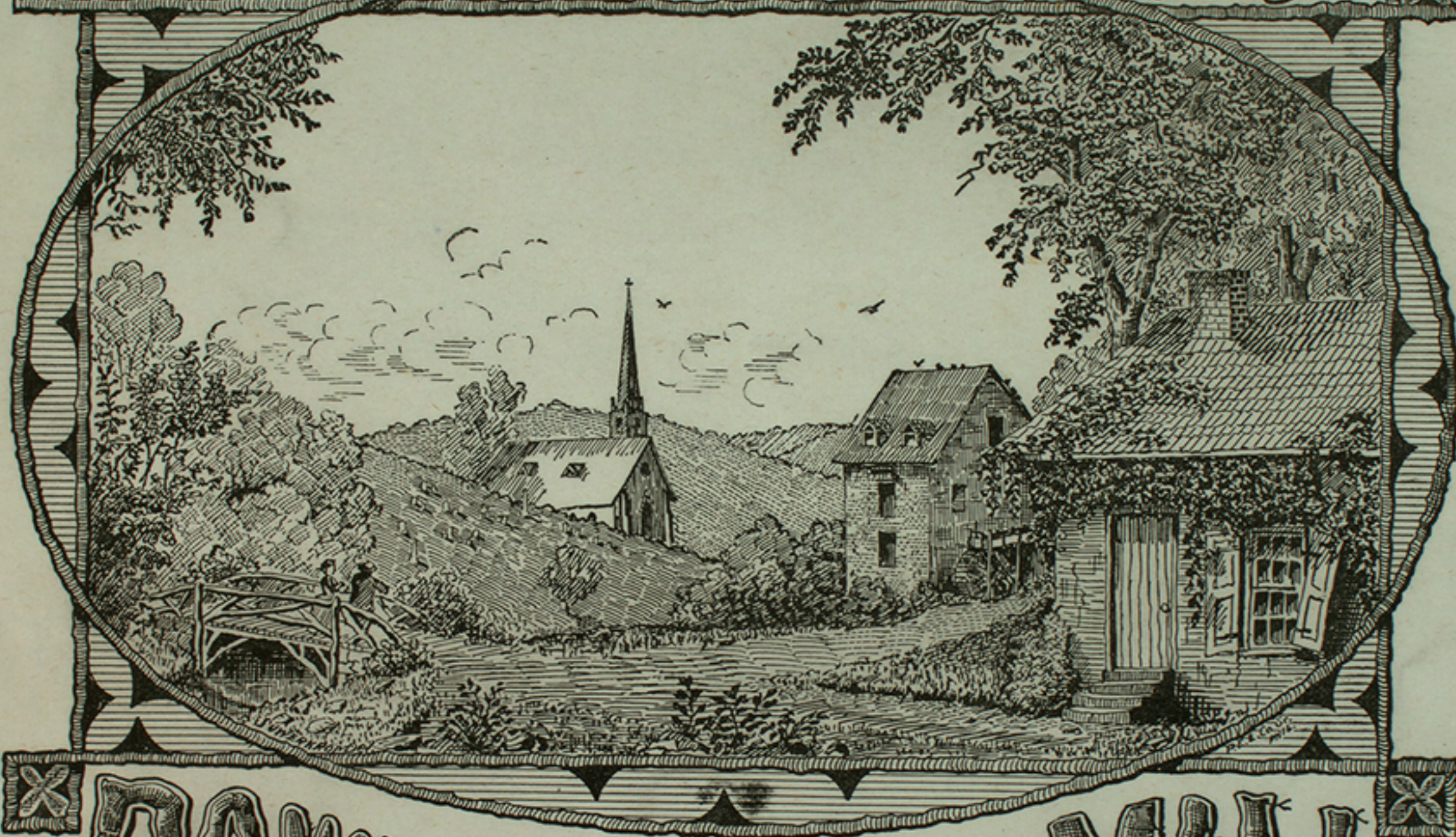


With Compliments of Publishers.

TO MY WIFE.

THE OLD SCHOOL-HOUSE



DOWN BY THE MILL

SONG AND CHORUS.

WORDS BY

SAMUEL C. UPHAM.

MUSIC BY

H. P. Danks.

Author of "Silver Threads among the Gold," "Sweet Lillie, my Darling," etc.

PHILADELPHIA:

PUBLISHED BY **W. H. BONER & CO.** AGTS., 1102 CHESTNUT ST.

Copyright, 1876, by SAMUEL C. UPHAM.

J. M. ARMSTRONG, MUSIC TYPOGRAPHER, N. E. Cor. Chestnut & Fifth Sts., Philada.

31

The Old School-House down by the Mill.

SONG AND CHORUS.

Words by SAMUEL C. UPHAM.

Music by H. P. DANKS

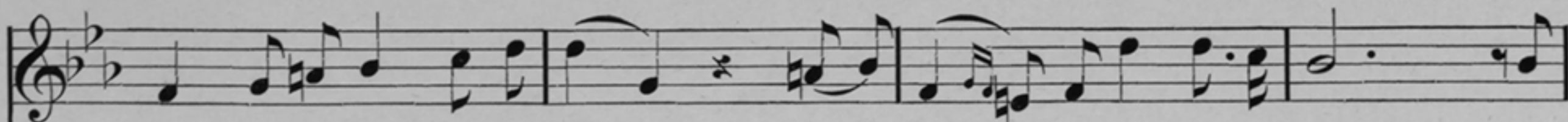
Andante cantabile.

The piano introduction consists of two staves. The upper staff is a treble clef with a key signature of two flats (B-flat and E-flat) and a common time signature (C). It contains four measures of whole rests. The lower staff is a grand staff (treble and bass clefs) with the same key signature and time signature. It contains four measures of music, starting with a bass line of eighth notes and a treble line of chords.

The vocal melody line is a single treble clef staff with a key signature of two flats and a common time signature. It contains four measures of music, corresponding to the lyrics below.

1. Do you remember, dear Annie, The old School-house down by the mill, With
2. Do you remember, dear Annie, Jack Mar - lin, just home from the sea, Who
3. In the old church-yard, sweet Nellie, And jol - ly Jack Mar - lin, the groom, The

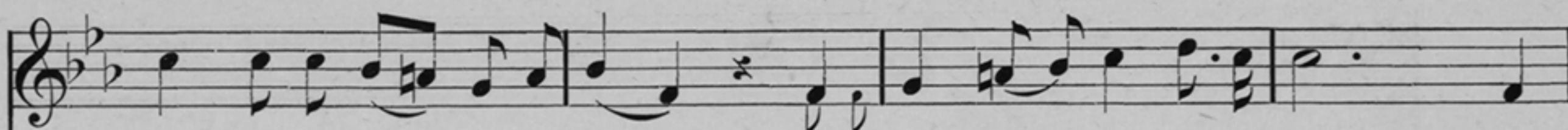
The piano accompaniment for the lyrics consists of two staves. The upper staff is a treble clef with a key signature of two flats and a common time signature. It contains four measures of music, each measure corresponding to a line of lyrics. The lower staff is a bass clef with the same key signature and time signature. It contains four measures of music, each measure corresponding to a line of lyrics. The music is a simple harmonic accompaniment.



moss - y and i - vy-clad roof,
aft - erward courted and wed,
mas - ter with rust - y, brown wig,

And its old and worm-eaten sill;
Dear Nel - lie, sweet Nellie Magee;
Now lie side by side in the tomb.

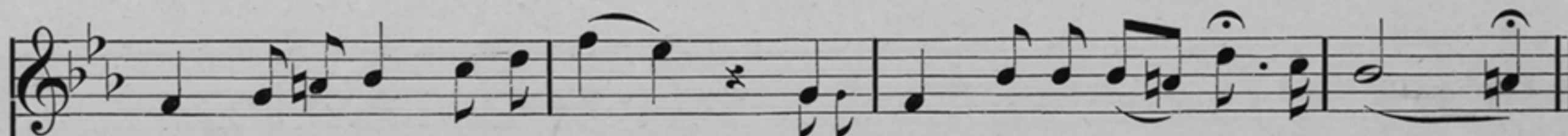
Its
The
Our



weather-boards din-gy and gray,
day that we sung and we danced
brows are now wrinkl'd, dear Annie,

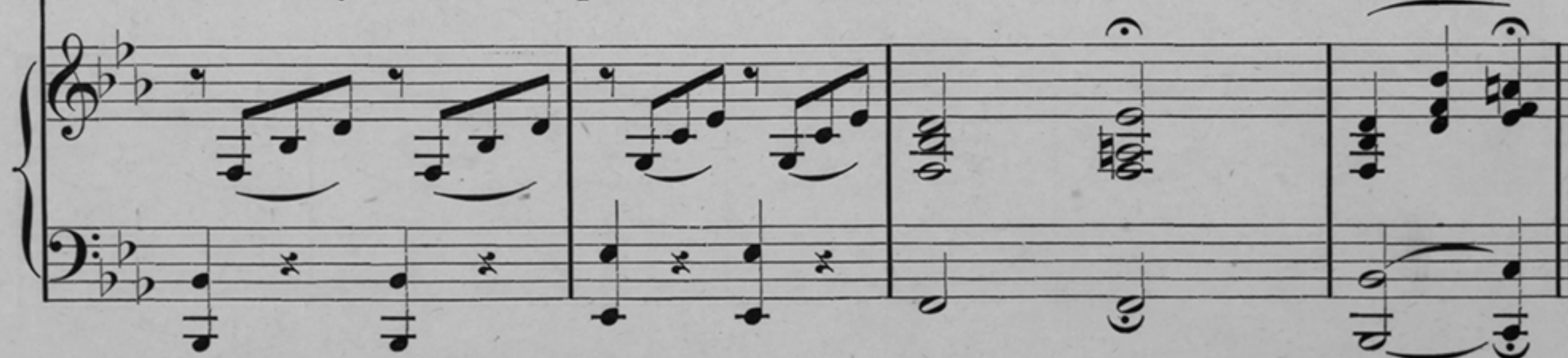
And shutters that creak'd in the wind,
'Neath the loft - y syc - a - more tree,
Our locks are quite frost - y and hoar,

The
The
And

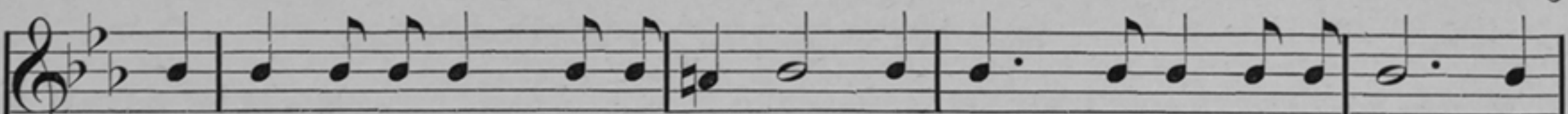


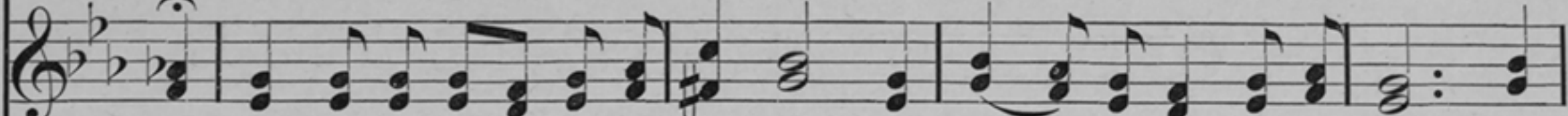
mas - ter with rust - y, brown wig,
fair - est of all that were there,
friends one by one have de - part - ed,

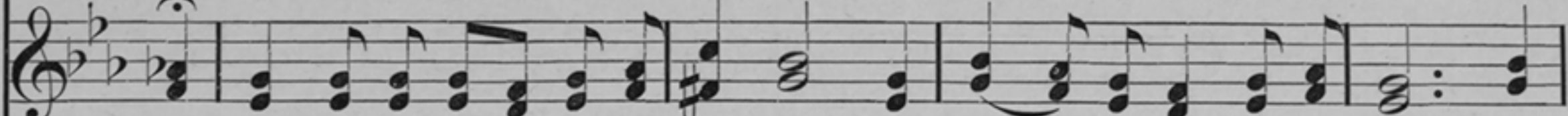
And queue that hung dangling be - hind?
Was the maid of the bride, Lil - lie Lee?
No more to re - turn, nev - er more.

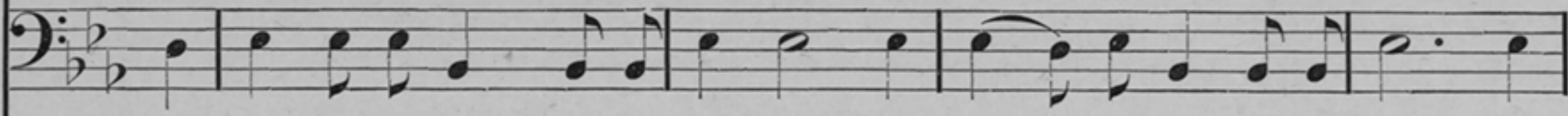


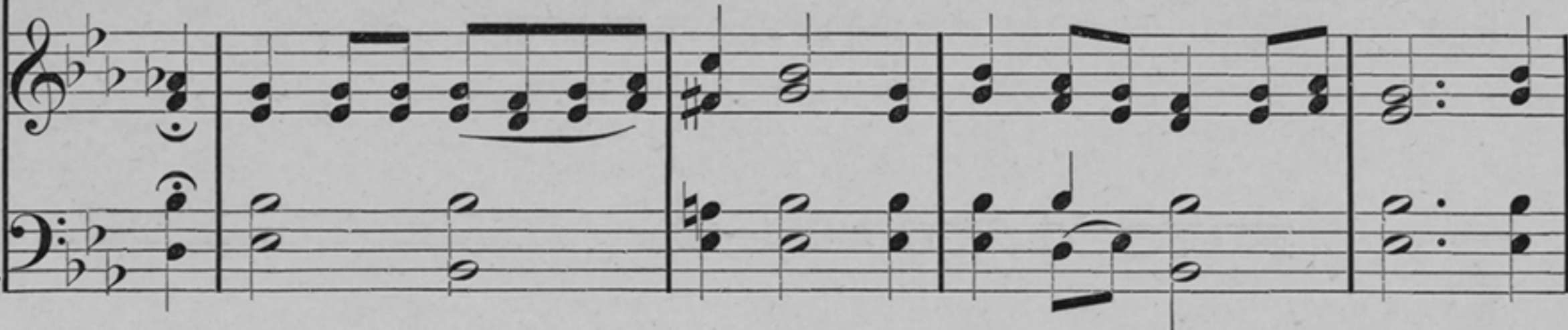
CHORUS.

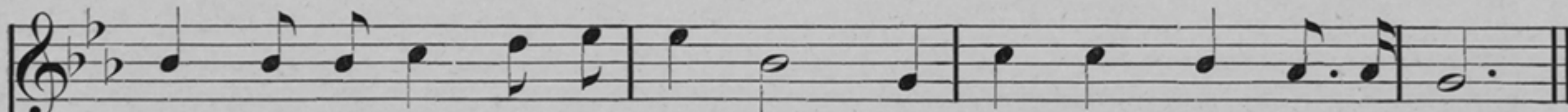
Tenor.  We sit in the twilight and pon - der O'er scenes far down the dim past, With

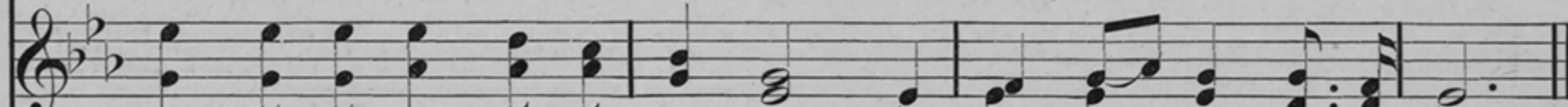
Soprano.  We sit in the twilight and pon - der O'er scenes far down the dim past, With

Alto.  We sit in the twilight and pon - der O'er scenes far down the dim past, With

Bass.  We sit in the twilight and pon - der O'er scenes far down the dim past, With

PIANO. 

 hearts ev - er true to each oth - er, Where-e'er our lot shall be cast.

 hearts ev - er true to each oth - er, Where-e'er our lot shall be cast.

 hearts ev - er true to each oth - er, Where-e'er our lot shall be cast.

 hearts ev - er true to each oth - er, Where-e'er our lot shall be cast.

