



FROM
C. T. BRONSON,
SHEET MUSIC
AND MUSICAL
INSTRUMENT
DEPARTMENT

- DELEHANTY
- | | | | |
|-------|----------------------------|-------|-------------------------------|
| No. 1 | WAVE OF THE VALLER. | No. 5 | OUT IN THE FOREST WITH ANNIE. |
| 2 | LITTLE PRAIRIE FLOWER. | 6 | BEAUTIFUL BLUE BELLS. |
| 3 | PRETTY LITTLE JESSIE. | 7 | VIOLETS DIPPED IN DEW. |
| 4 | MY LOVE AMONG THE FLOWERS. | 8 | LAUGHING EYES OF BLUE. |
| | | 9 | DID YOU CALL ME. |

4

BOSTON.

OLIVER DITSON & Co. 341 Washington St.

NEW YORK, CHICAGO, SAN FRANCISCO, CINCINNATI, PHILADELPHIA.

VIOLETS DIPPED IN DEW.

Words and Music by W. H. DELEHANTY.

Arr. by H. WANNEMACHER.

Moderato.

PIANO.

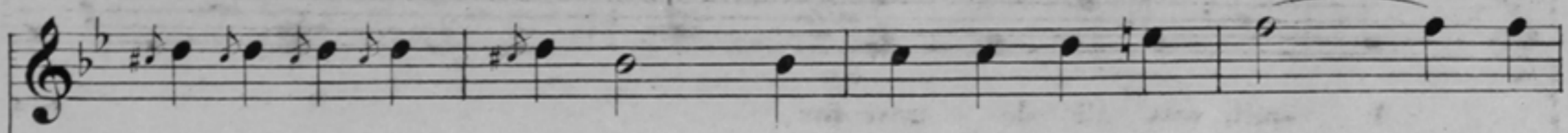
Introduction for piano. The piece begins with a treble clef, a key signature of one flat (B-flat), and a common time signature (C). The first measure is marked with a piano dynamic (*p*). A repeat sign follows, with the instruction "2^d time *ff*" (second time fortissimo) written above the staff. The bass clef accompaniment consists of chords and single notes.

The first system of piano accompaniment continues the piece. It features a treble clef with a melodic line and a bass clef with harmonic support. The music concludes with two first endings, labeled "1." and "2.", which lead to the vocal entry.

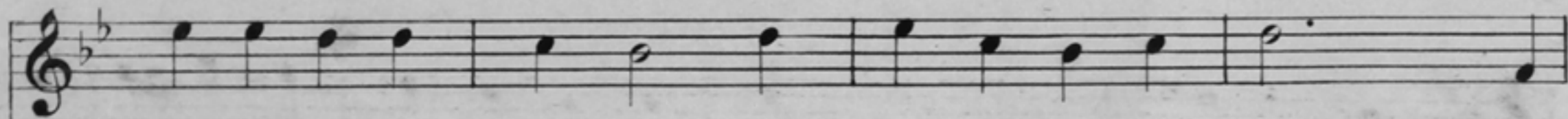
The vocal line begins with a treble clef, a key signature of one flat, and a common time signature. It starts with a piano dynamic (*p*) and consists of a single melodic line.

1. As I strolled out one evening the sun had just gone down, While
 2. I followed on behind her I think she knew it well, And
 3. At length I did approach her and ventured in to talk By

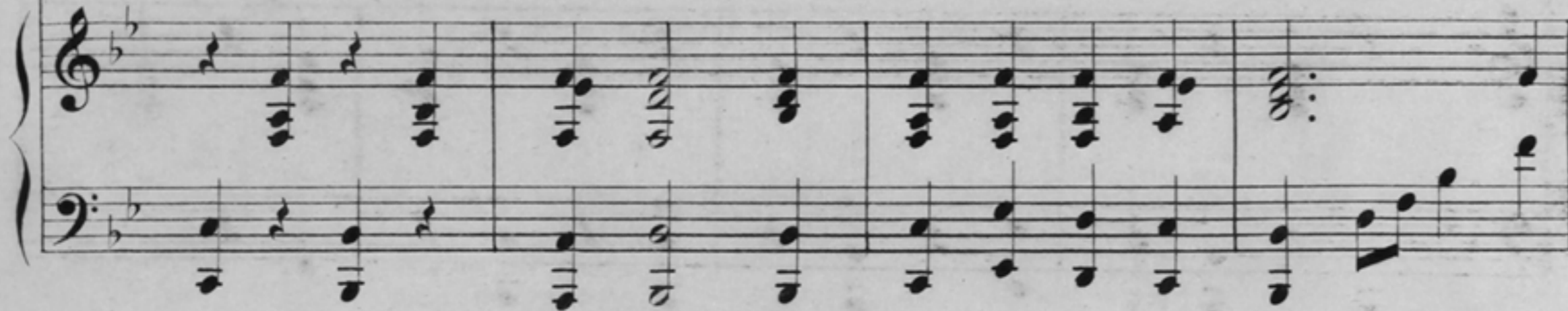
The piano accompaniment for the vocal line. It features a treble clef with chords and a bass clef with a simple harmonic accompaniment. The dynamic is marked as piano (*p*).



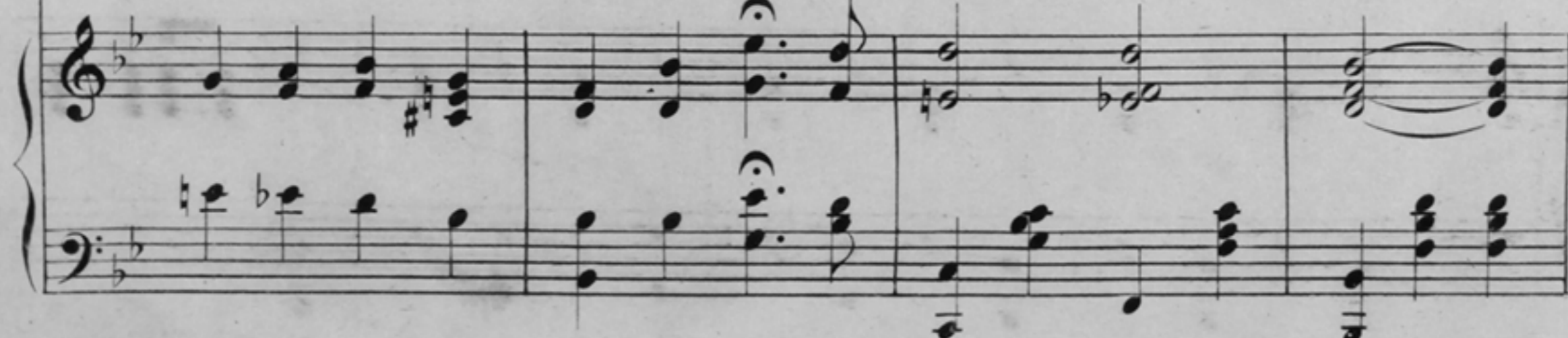
lei - surely me - - andering a lit - tle way from town, I
as a sweet re - - minder her handkerchief it fell, I
asking her per - - mission to join her lone - ly walk, She,



there be - held a dam - sel with eyes the brightest hue, Be -
raised the scented lin - en from off the gras - sy ground, Her
blushing, frowning, smiling, said, Oh! I think your rude, But



neath her dark eye - - lash - es like violets dipped in dew.
name in let - - ters crimson on one corner there I found.
those bright eyes be - - guiling seemed to say "I wish you would."

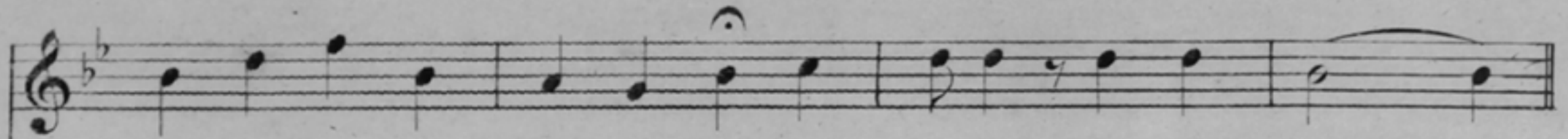


Chorus.

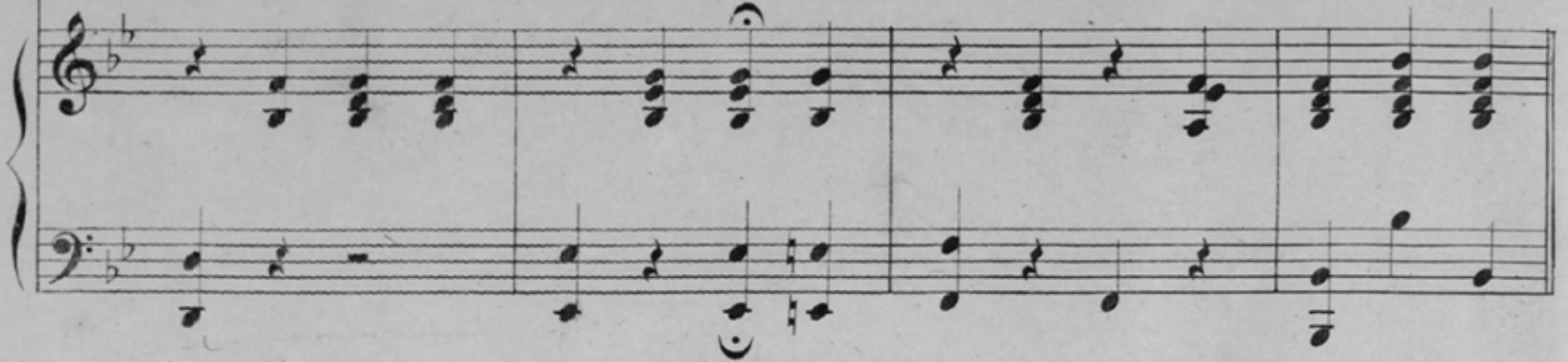
A smile was all she gave me, But
 She deigned to smile up - - on me, That
 Then arm in arm we wandered, Yes!

how it did en - slave me, 'Twas love the first I knew. There's
 mo - ment she had won me, It pierced my poor heart through. There's
 side by side me - andered, And told our love tales too, There's

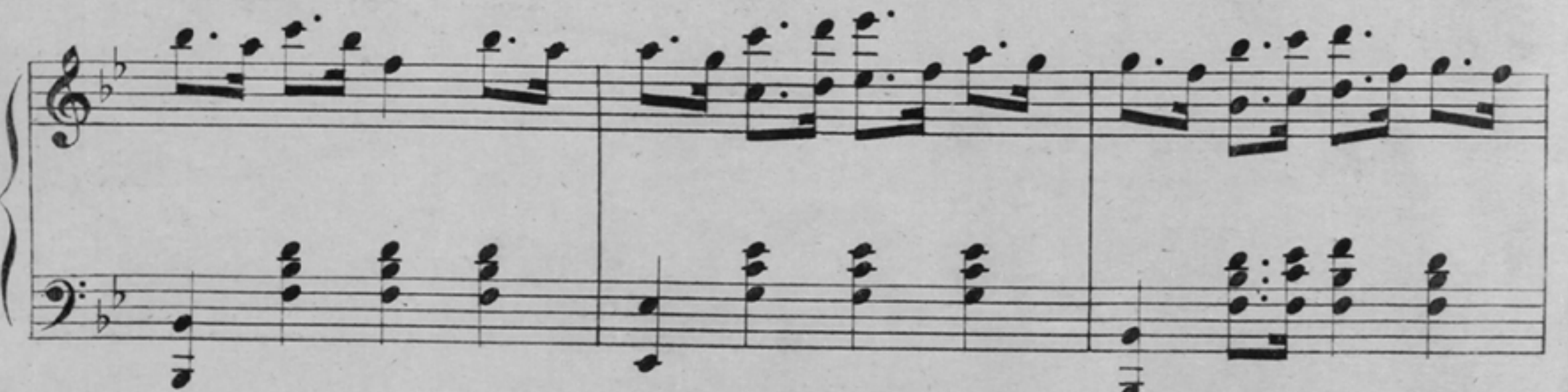
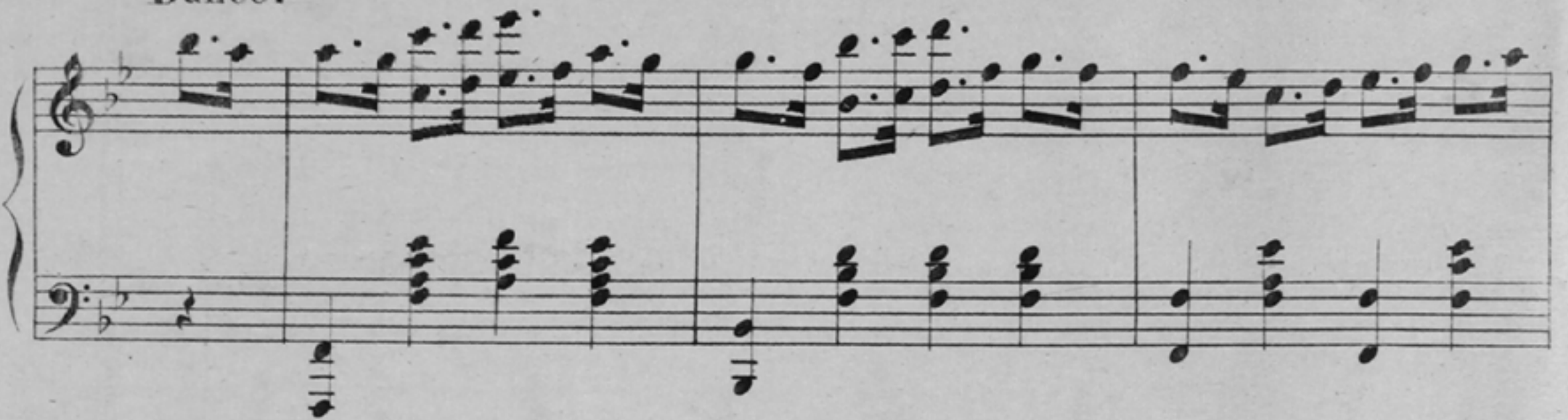
some sweet charm en - - trancing With - - in those eyes so blue. A
 some sweet charm en - - trancing With - - in those eyes so blue. A
 some sweet charm en - - trancing With - - in those eyes so blue. A



dreamy soft ex - - pression like violets dipped in dew.
dreamy soft ex - - pression like violets dipped in dew.
dreamy soft ex - - pression like violets dipped in dew.



Dance.



D. S.

Schlimper, Eng.