

# IS IT WRONG TO KISS?



J.W. BISCHOFF.

CINCINNATI.  
John Church & Co.

5

CHICAGO.  
Root & Sons Music Co.

*Published by  
J.W. Bischoff  
112 E. 1st St.*

# IS IT WRONG TO KISS?

## BALLAD.

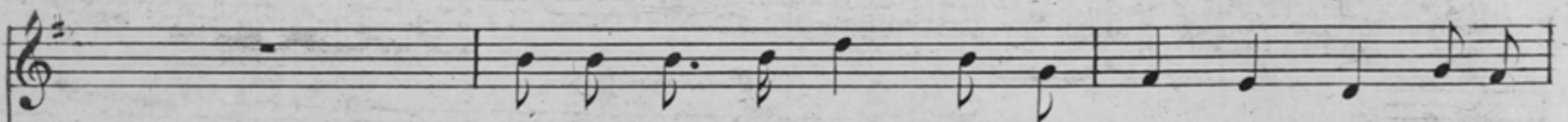
Composed by

J. W. BISCHOFF.

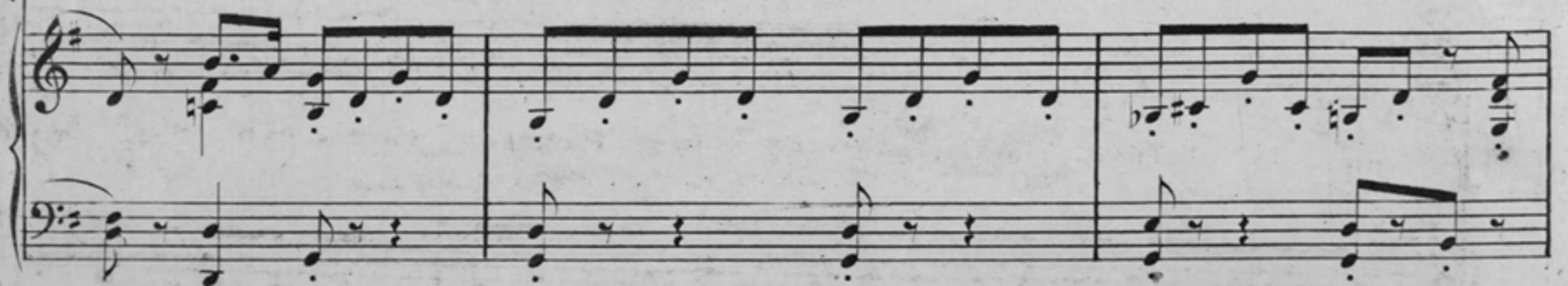
Moderato.

VOICE. 

PIANO. 

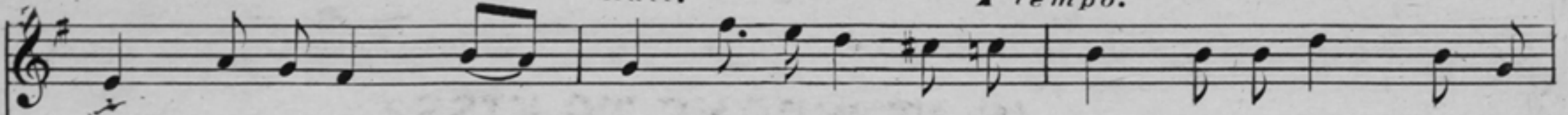


Is it wrong to kiss? asked a tim - - id maid, Of the

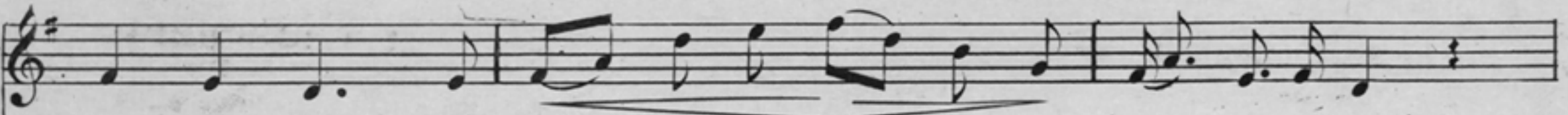
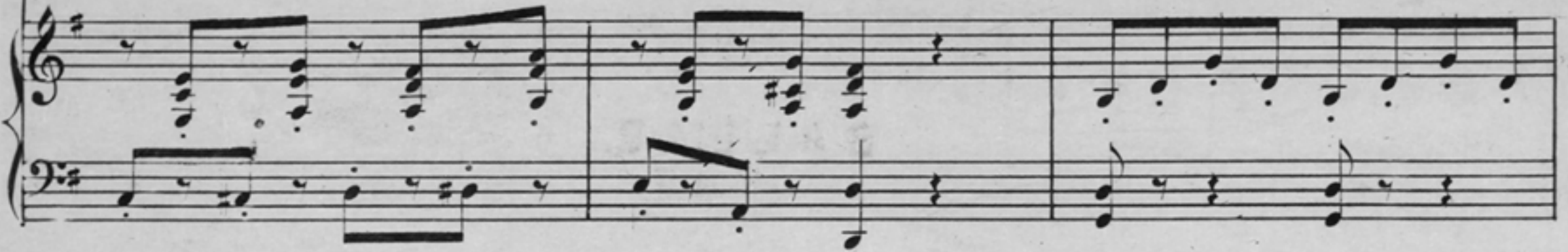


*Rall.*

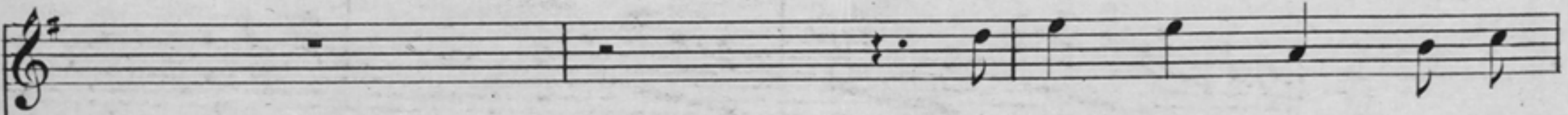
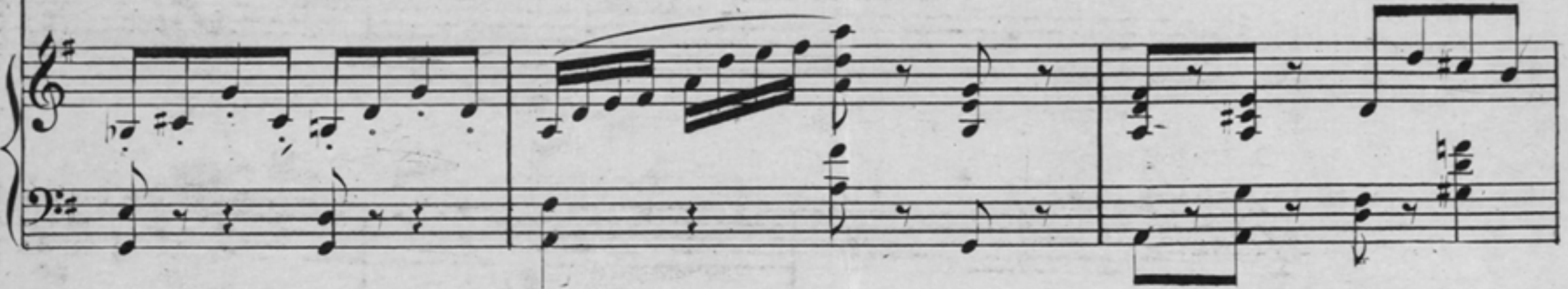
*A tempo.*



shim-mer-ing sands that bordered the deep, No an-swer she got, save the

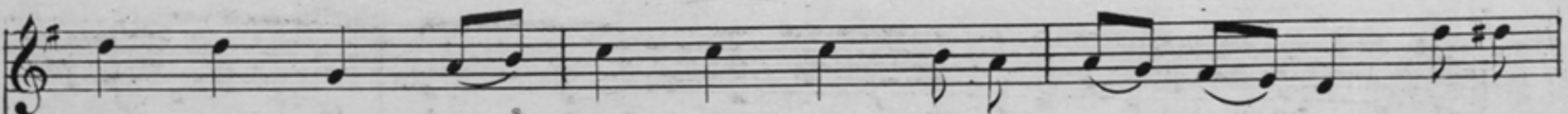


wave-lets played, A - round - e - lay gay, as they kissed her feet.

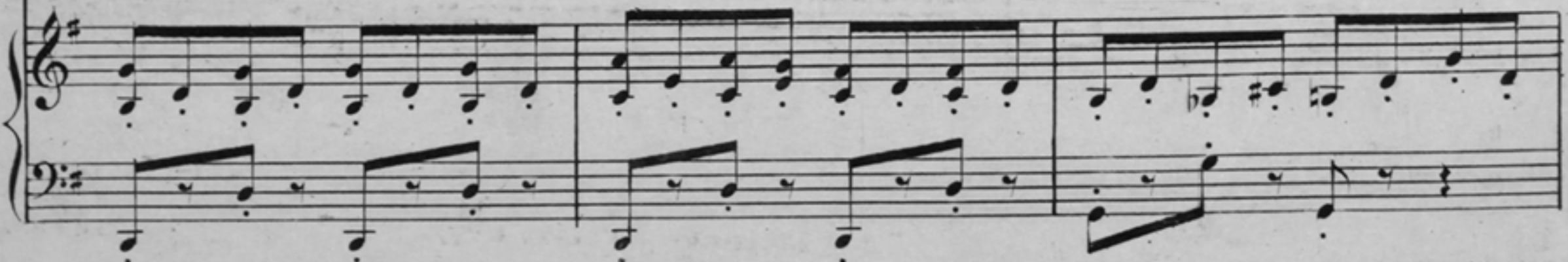


She asked the sun but he

*gva*



on - - ly turned his sau - cy face from the east - ern sky, And he



*Rall.*

kissed her cheeks till they fair - ly burned, And a tear of vex - a - - tion

*A tempo.  
dolce.*

dimmed her eye . . . . . She asked the wind as it

came from the south, The self same ques - - tion, the

*Rall.*

*A tempo.*

an - - swer came, For a zeph - yr sprang up and kissed her mouth, Till her

cheeks and her lips they seemed a flame; She asked a youth, who

chanced a - - long, And the mor - al ques - tion was solved in a trice, For he

an - swered "Oh, maid - en, it may be wrong, But, - (here he proved it,) 'Tis

ve - ry nice," "ve - ry nice," "Ve - - ry nice?"