

Keeweenaw
Thanksgiving 1893

Especially Composed for and
Sung with great success by

C. HAYDEN COFFIN

WITH THE
LILLIAN RUSSELL OPERA CO.

I PROMISE YOU!



*Yours truly,
C. Hayden Coffin
May 1893*

SONG
WITH
PIANO
ACCOMPANIMENT

Soprano or Tenor in G. Mezzo Soprano or Baritone in F. Alto or Bass in E.

4.

BY

EDUARD HOLST.

NEW YORK

Published by **N. WEINSTEIN & CO.** 24 West 23rd St.

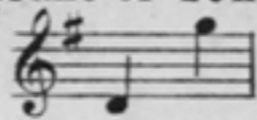
Copyright 1893 by N. Weinstein & Co.

I PROMISE YOU.

SONG.
Soprano or Tenor.

Words by
SHORN CLIFFE.

Music by
EDUARD HOLST.



I prom - ise you, in an - swer to your pray'r, that
I prom - ise you a love so vast and deep, that

I through life will ev - er faith - ful be; And
'twill sur - round you like a migh - ty sea; Yet

well I know, my dar - ling pure and fair, I
safe up - on its swel - ling bos - om keep, The

Piu

need not ask that you be true to me! The
precious heart that is so dear to me! Tho'

animato

shade of care may cloud your path some day, The
winds may rise, and storms may rage a-round, My

mf

weight of sor-row press up-on your heart; At
love shall be your guide 'till dan-ger's past; And

such a time, when oth-ers pass a-way I
in a joy-ous ha-ven shall be found, The

cres

prom - ise, that from you I ne'er will part, I
 same fond love, un - swer - ving to the last, The

prom - ise, that from you I ne'er will part, At
 same fond love, un - swer - ving to the last, Yes

such a time when oth - ers pass a - way, I
 in a joy - ous ha - ven shall be found, The

colla

promise that from you I ne'er will part!
 same fond love, unswerving to the last!

voce *f* *rall* *D.S.*