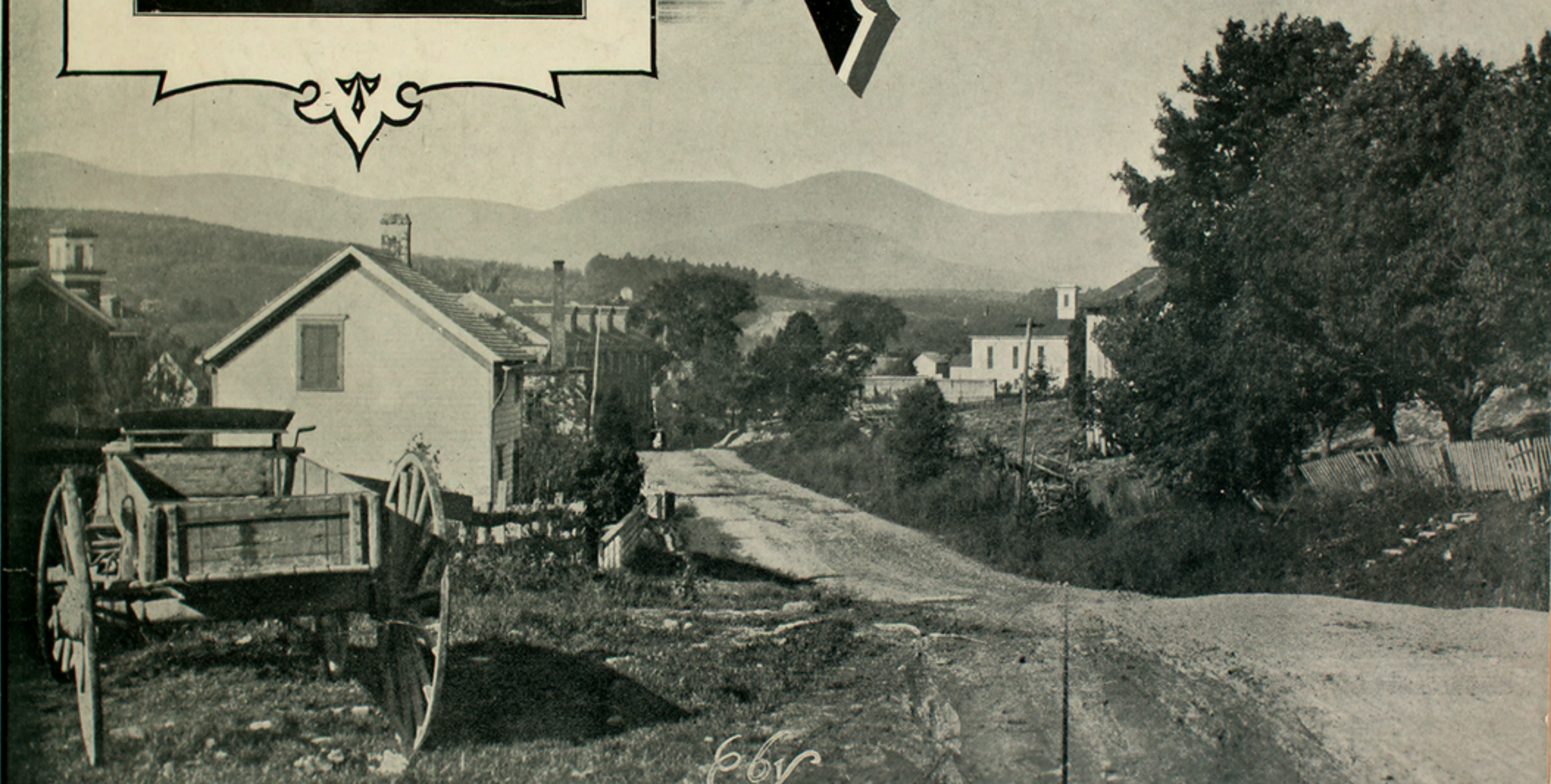


SUNG WITH GREAT SUCCESS BY



IN THE VALLEY OF KENTUCKY



Edy
TONY STANFORD.

Author of
"DAY BY DAY." "I LEFT BECAUSE I LOVE YOU." ETC.

PUBLISHED BY
LEO. FEIST.  **36 WEST 28th ST. N.Y.**
LONDON, ENGLAND. B. FELDMAN, - 9 BERNERS ST. W. TORONTO, CAN. WHALEY, ROYCE & CO.

Respectfully Dedicated to Mr. F. F. PROCTOR Jr.

IN THE VALLEY OF KENTUCKY.

TONY STANFORD.

Composer of } I Left Because I Love You.
Day By Day, etc.

Andante.

The piano introduction consists of two staves. The right hand begins with a series of chords and moving lines, marked with a forte (*f*) dynamic. The left hand provides a steady accompaniment. The tempo is marked 'Andante'.

VOICE.

The first system of the vocal melody and piano accompaniment. The vocal line is on a single staff, and the piano accompaniment is on two staves. The lyrics are: "In the Val-ley of Ken-tuck-y Where the grass is al-ways blue, And the Then at times my thoughtswouldwander To that coz - y lit - tle nook, Where". The piano part is marked with a piano (*p*) dynamic.

The second system of the vocal melody and piano accompaniment. The vocal line continues with the lyrics: "birds are sing - ing sweet-ly all the day. There I Nell and I as sweethearts used to meet. There I". The piano accompaniment continues with a piano (*p*) dynamic.

The third system of the vocal melody and piano accompaniment. The vocal line concludes with the lyrics: "had a sweet heart Nel - lie, The sweet-est girl I knew, One told her how I loved her, Be - side the babl - ing brook, Ah!". The piano accompaniment continues with a piano (*p*) dynamic.

day she died and then I went a - way. My
 life was then to us a joy com - plete. In

heart is dai - ly yearn - ing for that dear old south - ern home, For
 mem - 'ry I can see a - gain, the bridge that spanned the stream, O'er

in my dreams I of - ten think I see, Just a pic - ture of the mead - ow,
 which we of - ten wandered side by side, And I hear the rippling wa - ters,

And the cornfields green, Which brings back ten - der mem - o - ries to me.
 As I fond - ly dream, Of one who prom - ised that she'd be my bride.

In the Valley of Kentucky. 3.

"SYMPHIA WALTZ."

THE LATEST BY THE COMPOSER OF
 SMOKY MOKES, CALANTHE WALTZES &
 BLAZE AWAY.

Chorus.

Take me back to old Ken-tuck - y, to the home I love so well, The

scenes of my dear child - hood, and the rest - ing place of Nell; For my

heart is ev - er pin - ing, for the sun that's ev - er shin - ing, In the

Val - ley of Ken - tuck - y, My home, sweet home.

In the Valley of Kentucky. = 4.

“SYMPHIA WALTZ.”

THE LATEST BY THE COMPOSER OF
SMOKY MOKES, CALANTHE WALTZES &
BLAZE AWAY.