

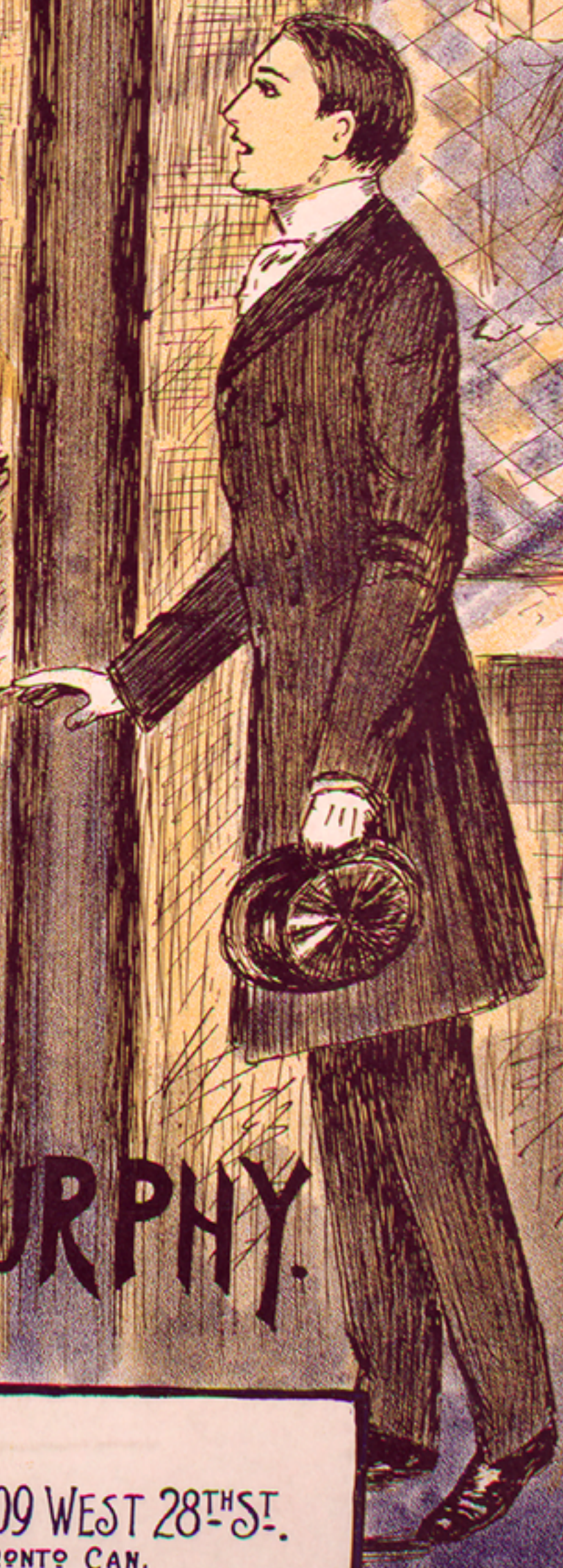
THE VOICE HEARD IN THE CHOIR

(SONG)

WORDS & MUSIC

BY

FRANCIS L. MURPHY.



5

NEW YORK
PUBLISHED BY ARTHUR W. TAMS 109 WEST 28TH ST.
LONDON, ENG. TORONTO CAN.
CHAS. SHEARD & CO. WHALEY ROYCE & CO.

THE VOICE HEARD IN THE CHOIR.

Words & Music by FRANCIS L. MURPHY.

Moderato.

mf *rall.*

1. One bright and sun-ny Eas-ter morn, I strolled through a small town, A
 2. The ser-vice end-ed still I stayed, My thoughts were far a-way, My

p

stran-ger there, I knew not what to do, While
 moth-er's spir-it seem-ing-ly was near, Once

on my walk I saw a church that seemed to nes-tle down, A
 more I thought I felt her kiss and heard her soft-ly say, "In

mong the trees and beck - on there to you, I
Heav - en I am wait - ing for you dear," Now

en - tered in with rev - 'rence while the Choir sweet - ly sang, Their
if I could have ev - 'ry - thing that great wealth could com - mand, I'd

glad ho - san - nas to the ris - en King, — But one voice stirred my ve - ry soul as
give it all to be there once a - gain, — With - in that lit - tle coun - try church that

through the church it flowed, With Heav'n - ly mel - o - dy, it seemed to ring
nest - led 'mong the trees, If I could hear once more that Heav'nly strain.

CHORUS.

The mem-'ry of that Eas - ter morn' will al - ways with me stay, I'll

The first system of the chorus features a vocal line in treble clef with a common time signature. The lyrics are "The mem-'ry of that Eas - ter morn' will al - ways with me stay, I'll". The piano accompaniment consists of a right hand in treble clef and a left hand in bass clef, both in common time. The right hand plays a melody with eighth and quarter notes, while the left hand provides a harmonic accompaniment with chords and moving lines. A dynamic marking of *p* (piano) is present in the piano part.

ne'er for get the sing - er or the an - them sung that day, It

The second system continues the vocal line with the lyrics "ne'er for get the sing - er or the an - them sung that day, It". The piano accompaniment continues with similar harmonic support, maintaining the common time signature.

seemed to reach my in - most soul and set my heart a - fire, Tho'

The third system continues the vocal line with the lyrics "seemed to reach my in - most soul and set my heart a - fire, Tho'". The piano accompaniment continues with similar harmonic support, maintaining the common time signature.

years may pass, I'll ne'er for - get, The voice heard in the Choir.

The fourth system concludes the chorus with the lyrics "years may pass, I'll ne'er for - get, The voice heard in the Choir." The piano accompaniment concludes with a final chord. A dynamic marking of *rall.* (rallentando) is present in the piano part.