

JUST AS LONG AS YOU HAVE ME

SCHWAB AND KUSELL
BRING YOU

THE GINGHAM GIRL

THE LATEST MUSICAL COMEDY

BOOK BY
DANIEL KUSELL
LYRICS BY
NEVILLE FLEESON
MUSIC BY
ALBERT VON TILZER

VOCAL

Business Is Bad
Forty-Second Street Strut
Just As Long As you Have Me
Tell Her While The Waltz
Is Playing }
The Twinkle In Your Eye
Love And Kisses
Libby
Selection

HARMS
NEW YORK

MADE IN U.S.A.

Just As Long As You Have Me

Duet

Mary and John

Words by
NEVILLE FLEESON

Music by
ALBERT VON TILZER

Moderato espressivo

Piano *mp*

The piano introduction consists of two systems of music. The first system has a treble clef staff with a melody of eighth notes and a bass clef staff with a simple accompaniment. The second system continues the melody and accompaniment, ending with a fermata over the final notes.

poco accel. *dim. e rall.*

The piano accompaniment for the first vocal line. It features a treble clef staff with chords and a bass clef staff with a simple accompaniment. The tempo marking *poco accel.* is at the beginning, and *dim. e rall.* is at the end.

p

We've reached the cross roads of our jour - ney,

The first vocal line, starting with a treble clef and a *p* dynamic marking. The lyrics are written below the notes.

p

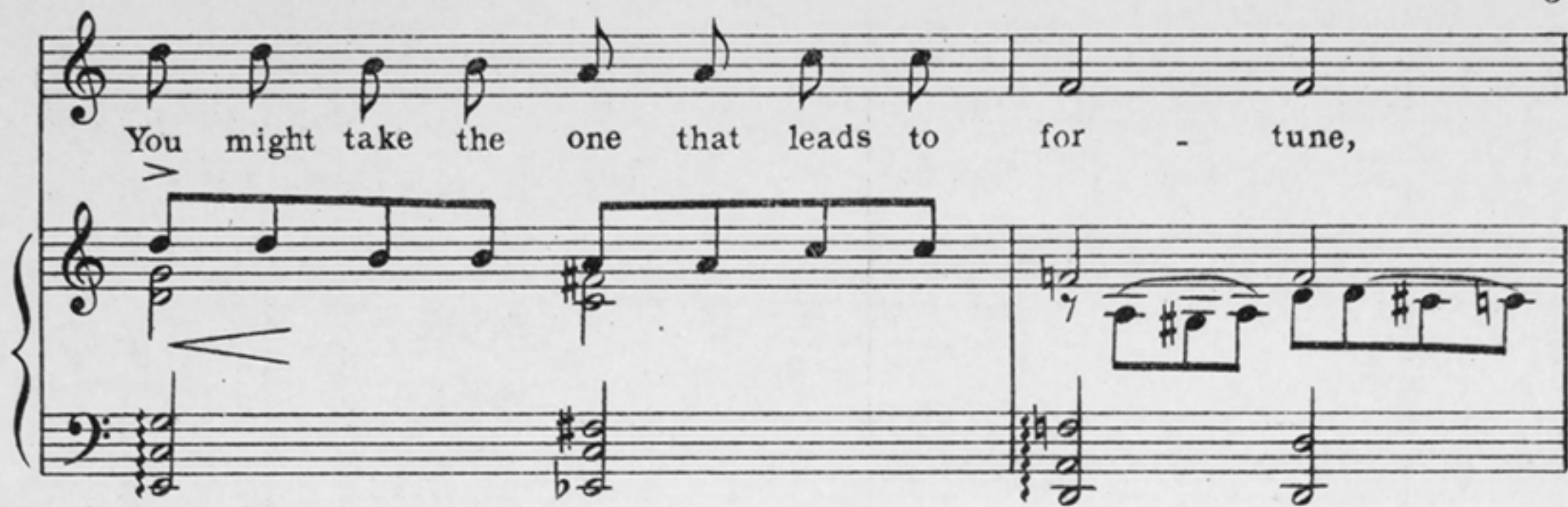
The piano accompaniment for the second vocal line. It features a treble clef staff with chords and a bass clef staff with a simple accompaniment. The *p* dynamic marking is at the beginning.

Each road leads you to who knows where:

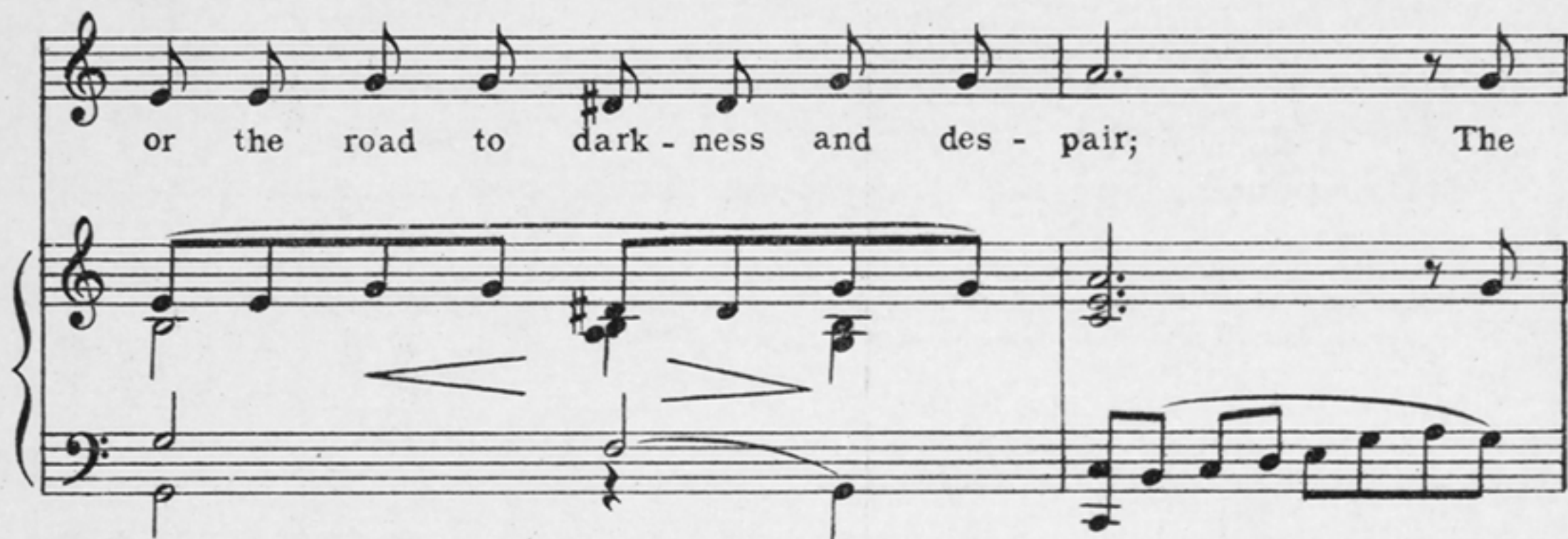
The second vocal line, starting with a treble clef. The lyrics are written below the notes.

The piano accompaniment for the third vocal line. It features a treble clef staff with chords and a bass clef staff with a simple accompaniment.

You might take the one that leads to for - tune,



or the road to dark - ness and des - pair; The



part - ing of the way has come, I know, ————— But



I just want to say be - fore you go: —————

rall.



4 Refrain Not too slow

p-f

Just as long as you have me, as long as I have you,

p-f

Detailed description: This system contains the first two staves of music. The top staff is a vocal line in treble clef with a common time signature. It begins with a repeat sign and contains the lyrics 'Just as long as you have me, as long as I have you,'. The bottom staff is a piano accompaniment in treble and bass clefs. It also begins with a repeat sign and features a *p-f* dynamic marking. A crescendo hairpin is visible in the piano part.

Noth - ing, dear, can come be - tween us two; _____

Detailed description: This system contains the third and fourth staves of music. The vocal line continues with the lyrics 'Noth - ing, dear, can come be - tween us two; _____'. The piano accompaniment continues with chords and moving lines in both hands.

Tho' you go a - way, I'll not bid you stay,

Detailed description: This system contains the fifth and sixth staves of music. The vocal line continues with the lyrics 'Tho' you go a - way, I'll not bid you stay,'. The piano accompaniment continues with chords and moving lines in both hands.

rall.

My heart seems to say. We will meet a - gain some day, This

rall.

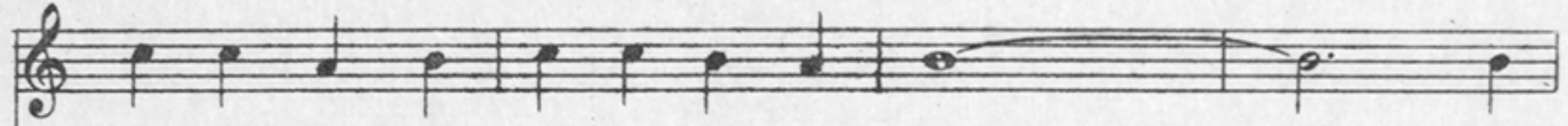
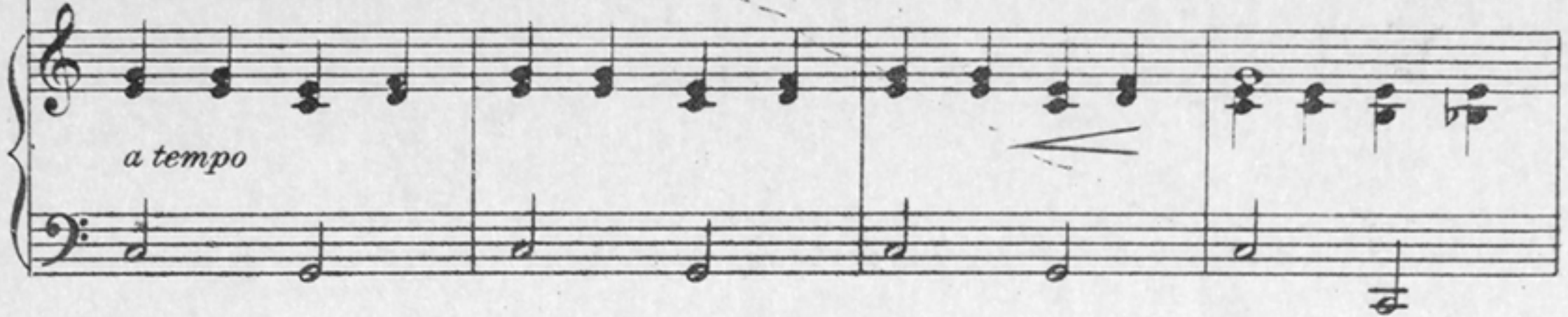
Detailed description: This system contains the seventh and eighth staves of music. The vocal line continues with the lyrics 'My heart seems to say. We will meet a - gain some day, This'. The piano accompaniment continues with chords and moving lines in both hands. A *rall.* (rallentando) marking is present above the vocal line and below the piano part.

a tempo

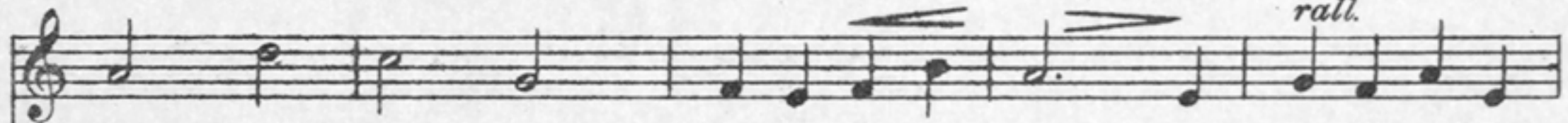


World is such a lit - tle place we can't be far a - part, Our

a tempo

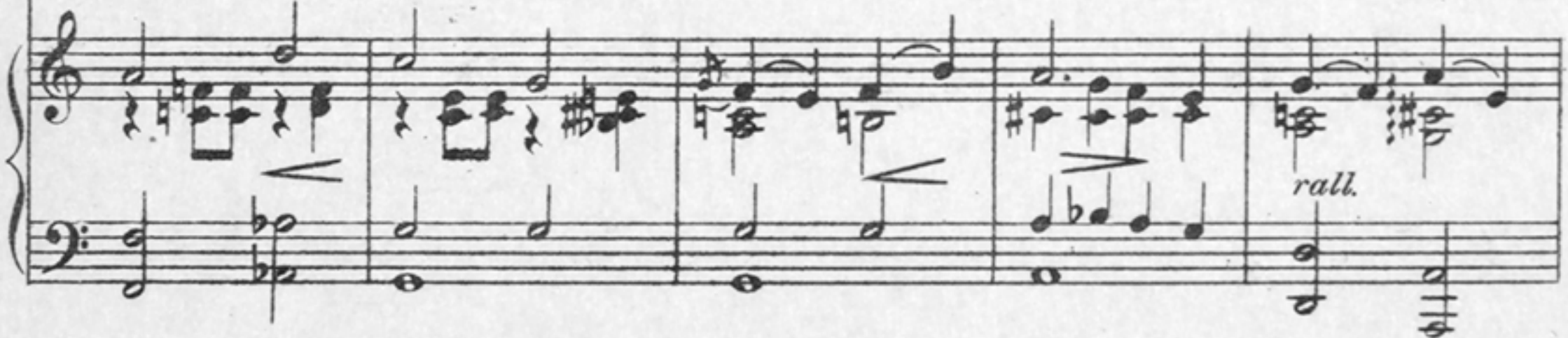


paths will cross and you will find me true, For



noth - ing real - ly mat - ters af - ter all, As long as you have

rall.



rall.



me, and I have you. you.

a tempo

