

A THOUGHT OF HOME AT SEA

Poetry by

M^{rs} F. Hemmings.



Composed for the

PIANO FORTE

BY

CHARLES E. HORN

Respectfully dedicated to

MR WOOD

by the

PUBLISHER

Price 37 1/2 Cts.

Philadelphia, Geo. Willig N^o 171, Chesnut St.

Entered according to act of Congress 1834 by Geo Willig at the Clerk's Office in the East^d District of Pa.

Lith. by M. E. D. Brown Phil^a.

A THOUGHT OF HOME AT SEA

Andante con espressione.

'Tis lone on the waters, when

eve's mournful bell Sends forth to the sun-set a note of farewell, Sends

forth to the sunset a note of farewell.

express: >

When, borne with the shadows and winds as they sweep There

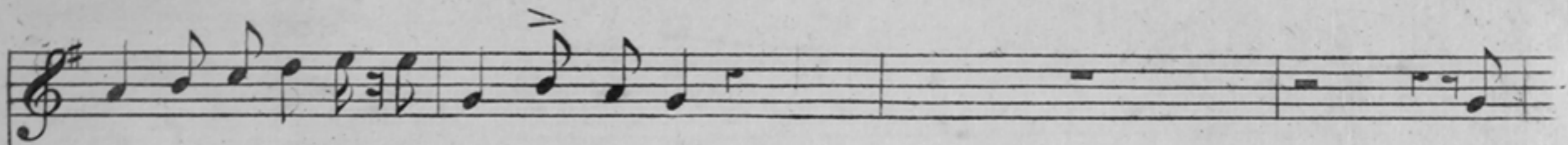
ff

comes a fond memo—ry Of Home o'er the deep! of home o'er the deep! a fond

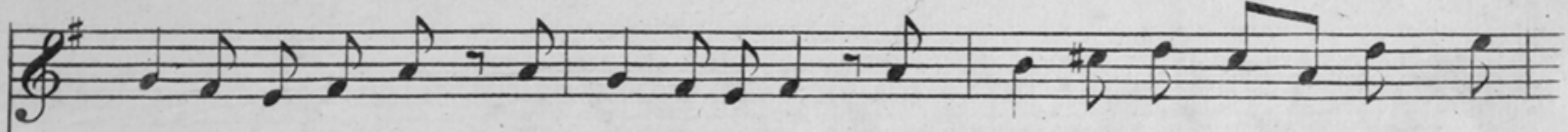
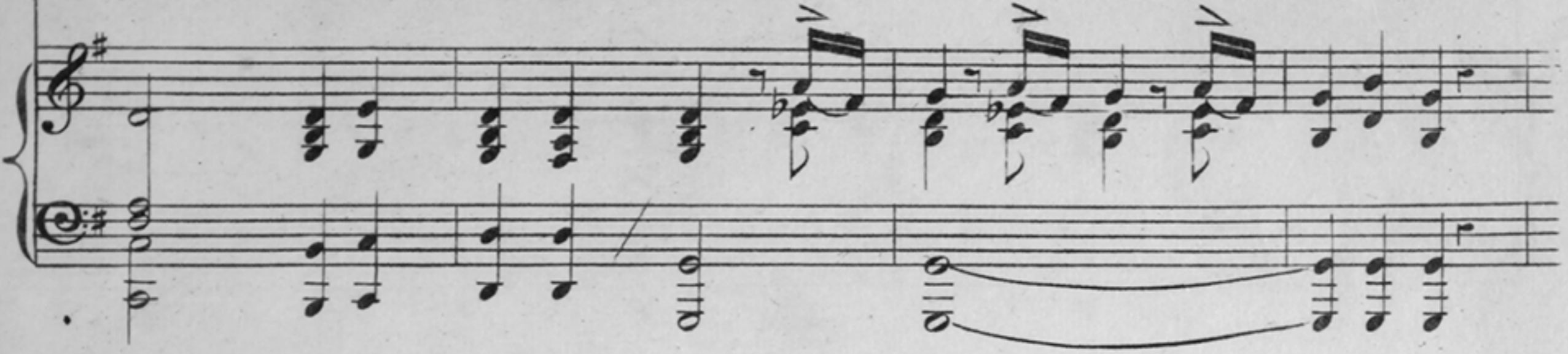
me— — — mo—ry, There comes a fond me—mo—ry of Home o'er the deep!

When the wing of the sea-bird is

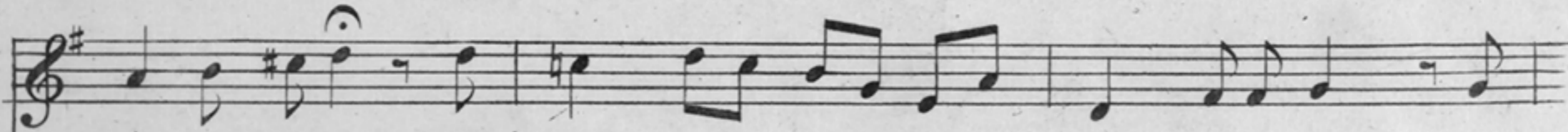
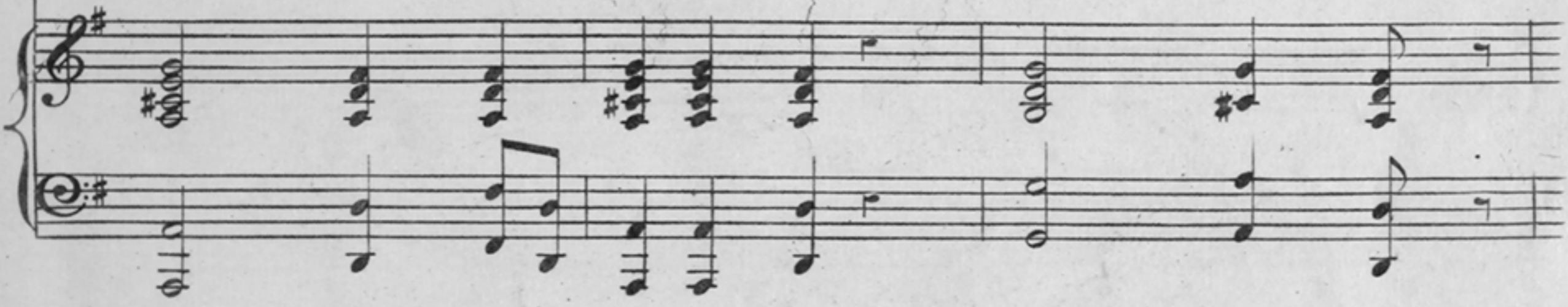
turn'd to her nest, And the heart of the sailor To all he loves best. And the



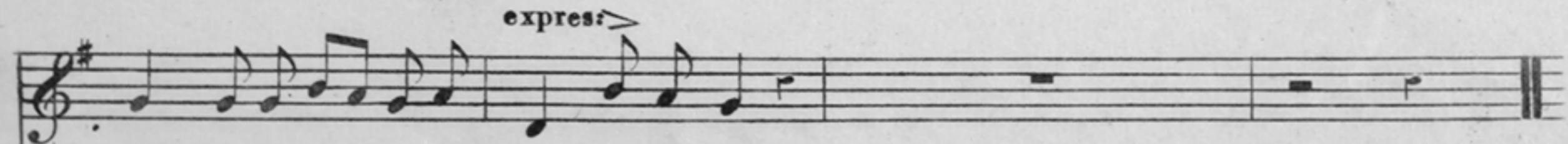
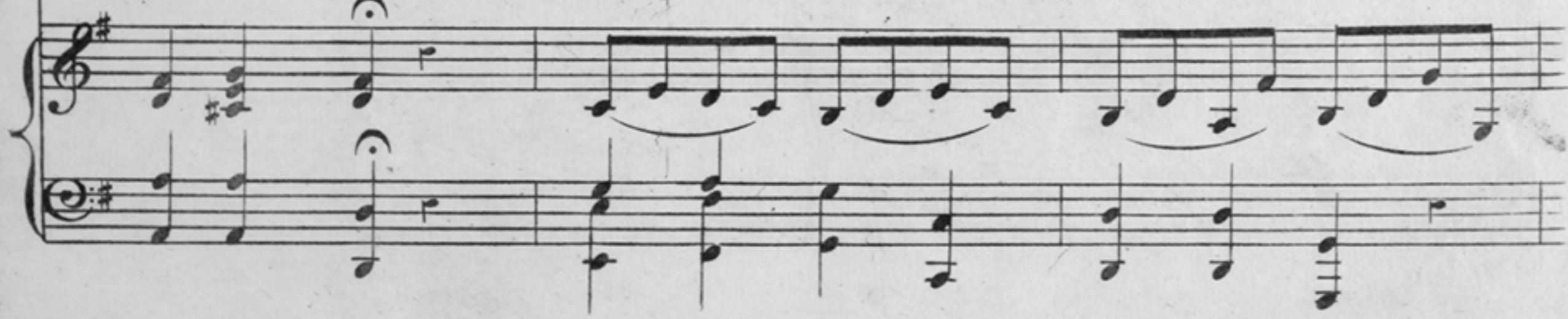
heart of a sailor To all he loves best. 'Tis



lone on the waters — That hour hath a spell To bring back sweet voi — ces, And



words of farewell! fare — well, fare — well, sweet voi — ces farewell! To



bring back sweet voices, And words of farewell!

